

RENTAL
EQUIPMENT

TRADE SHOW
& EVENTS



LOWE

WORLDWIDE RENTAL SPECIALISTS



Worldwide
Rental Specialists In
Refrigerated, Frozen
& Hot Equipment

ABOUT US

Lowe Refrigeration, Inc opened in 1990 as an extension of our European Company for support of the trade show/convention industry in the United States. We have since provided our services beyond our Contracted Shows to include Non-Contracted Shows and Special Events. Lowe Refrigeration's equipment is housed in our Fayetteville, GA facility located approximately 20 miles south of Atlanta's Hartsfield Jackson International Airport. All orders are processed through this facility along with any required maintenance and repairs to our fleet of equipment. We have a complete inventory of spare parts and components which allows us to maintain the technical condition and cosmetic appearance of our equipment to the very high standards expected by our clients. With over 30 years of experience in refrigerations sales, exhibition, event, and corporate refrigeration rental, you can be certain that we will have the answers to all of your refrigeration requirements.

SERVICES

Contracted Shows:

Since 1990, Lowe Refrigeration, Inc. has been the show appointed "refrigeration contractor" shipping refrigerated display cases to the major food tradeshow across the United States. Lowe Refrigeration's staff are always onsite to offer the technical support and service necessary to ensure the success of your display. Order forms and color brochures are included in the tradeshow kits and can also be found on the show website as well as the Lowe Refrigeration website under "Trade Show Order Forms".

Non-Contracted Shows:

For any size show, expo, convention, or meeting Lowe Refrigeration, Inc. can offer a complete selection of equipment. Non-contracted shows differ from contracted shows, hence in order for Lowe Refrigeration to offer our range for these types of events, we ask that the client cover 50% of the round trip freight. Equipment in small quantity is usually shipped crated to ensure safe arrival to the show as well as the return to Lowe Refrigeration without damage. This allows our clients to have access to our entire range in any quantity, anywhere in the United States. Equipment orders of a larger quantity will usually be shipped as a full truckload, and a staff member from Lowe Refrigeration will be onsite in order to assist in the unload and reload of the equipment. Therefore, if you have a need for equipment in relation to a non-contracted show, keep us in mind. Forms for these events can be faxed or emailed by request.

Special Events:

Following the popularity and success of the Modular Cold Rooms that have been utilized by our locations in Europe and Asia, we decided to introduce the very same to the sporting event/hospitality world in the United States. Modular Cold Rooms (Refrigerators or Freezers) are available, 8ft by 8ft size and multiples thereof, for short-term and long-term rentals. Clean, quiet, electric powered units ensure your equipment will be free of loud engine noise and diesel fumes. Perfect for any indoor or outdoor occasion - sporting events, catered events, carnivals, private gatherings, emergency refrigeration needs, and so much more. Our rental division (trade shows/conventions) compliments our support of the event industry by making available copious amounts of refrigerated display equipment found throughout this brochure.

Call with your request and we will provide the rental package to suit your needs. Lowe Refrigeration, Inc. will work with you to provide what you want, where you want, when you want it!

Refrigerated 2 – 22

B Series	2	Genova.....	10	K2T/K2TF	18
B – LG	3	Sara.....	11	K3T	19
B Corner	4	Stella	12	K Wood Chillers	20
Jinny	5	Mandy.....	13	H1	21
P360°	6	G5	14	G223	21
Oasis	7	Memphis	15	Starlet	21
F2 Chiller	8	Isola	16	Prep Counters	22
C Series	9	G4T/G6T Chillers	17		

Bakery 23 – 27

B1P	23	Victoria.....	25	L Harmony.....	27
Kubo 500R	24	L Symphony	26		

Wine Display 28

Bodega.....	28
-------------	----

Frozen 29 – 43

K1T	29	E2	32	DC8.....	39
K4TF	29	E3	33	G12.....	40
VV17.....	30	E4	34	SS2P.....	41
K4T	30	D1C	35	200GBT	42
G1T	31	Kubo 500F	36	H4IB.....	42
G6FT.....	31	B2F.....	37	Penguin.....	43
E1	32	F2	38	H2	43

Hot 44 – 50

Isola 4H	44	MCTM.....	47	DW	49
B1H.....	45	CO25.....	48	200 Hot.....	50
BR13H.....	46	MW	48	HSD2	50
MCT.....	47	Top2.....	49		

Non Refrigerated 51 – 54

I1.....	51	MSU.....	52	SSB3.....	54
I3.....	51	HWS.....	52	SSB1.....	54
MS12.....	51	PTS.....	53		
200 Dry	51	PT	53		

Cold Rooms 55 – 59

Ready Built Cold Room	55	Modular Cold Room.....	57	Modular Cold Room.....	59
Modular Cold Room	56	Modular Cold Room.....	58		



B Series

Features

- Automatic defrost
- Heater pan evaporation (no plumbing required)
- Built in preparation counter
- Castors supplied with case
- Easy to clean surfaces
- Forced air cooling
- Fully self contained unit
- Illuminated stainless steel display deck
- Rear access to display deck for server
- Refrigerated under-storage (accessed through rear doors with magnetic gaskets)
- Simple plug in operation
- Top hinged glass with hydraulic arm support for curved glass unit
- ABS foamed end walls
- Ice insert for fish display available upon request

* Display shelf available upon request (NOT refrigerated)



B - Back View

Specifications

Model Numbers

	B1	B2	B3
Width (inches)	52 ³ / ₈	77	101 ⁵ / ₈
Depth (inches)	43	43	43
Height (inches)	52 ¹ / ₂	52 ¹ / ₂	52 ¹ / ₂
Width without end walls (inches)	47	70 ¹ / ₄	94
Display area (square feet)	11	16 ¹ / ₂	22
Storage capacity (cubic feet)	5 ¹ / ₂	8 ¹ / ₄	10 ³ / ₄
Storage area width (inches)	47	70 ¹ / ₄	94
Storage area depth (inches)	20	20	20
Storage area height (inches)	10	10	10
Condensing unit size (HP)	1/3	1/3	1/2
Refrigerant	R404	R404	R404
Power supply v/Hz/Ph	120/60/1	120/60/1	120/60/1
Amps	20	20	20
Watts	2000	2000	2000
Deck fans	1	2	3
Temp Range	34/42°F or 1/6°C	34/42°F or 1/6°C	34/42°F or 1/6°C
Plug - each unit requires a single dedicated power supply; 24 hour power if keeping product in unit overnight.			



B - LG
Low Glass Option
Self Service



B - LG Back View

Features

- Automatic defrost
- Heater pan evaporation (no plumbing required)
- Built in preparation counter
- Castors supplied with case
- Easy to clean surfaces
- Forced air cooling
- Fully self contained unit
- Illuminated stainless steel display deck
- Rear access to display deck for server
- Refrigerated under-storage (accessed through rear doors with magnetic gaskets)
- Simple plug in operation
- Ice insert for fish display available upon request
- ABS foamed end walls

Specifications

Model Numbers

	B1LG	B2LG	B3LG
Width (inches)	52 3/8	77	101 5/8
Depth (inches)	43	43	43
Height (inches)	38 1/4	38 1/4	38 1/4
Width without end walls (inches)	47	70 1/4	94
Display area (square feet)	11	16 1/2	22
Storage capacity (cubic feet)	5 1/2	8 1/4	10 3/4
Storage area width (inches)	47	70 1/4	94
Storage area depth (inches)	20	20	20
Storage area height (inches)	10	10	10
Condensing unit size (HP)	1/3	1/3	1/2
Refrigerant	R404	R404	R404
Power supply v/Hz/Ph	120/60/1	120/60/1	120/60/1
Amps	20	20	20
Watts	2000	2000	2000
Deck fans	1	2	3
Temp Range	34/42°F or 1/6°C	34/42°F or 1/6°C	34/42°F or 1/6°C
Plug - each unit requires a single dedicated power supply; 24 hour power if keeping product in unit overnight.			

B Corner
90° Corner



‘B’ Corner - Back View



Features

- Automatic defrost
- Heater pan evaporation (no plumbing required)
- Built in preparation counter
- Castors supplied with case
- Easy to clean surfaces
- Forced air cooling
- Fully self contained 90° corner
- Ice insert for fish display available upon request
- Illuminated stainless steel display deck
- Rear access to display deck for server
- Simple plug in operation
- Top hinged glass with hydraulic arm support for curved glass unit

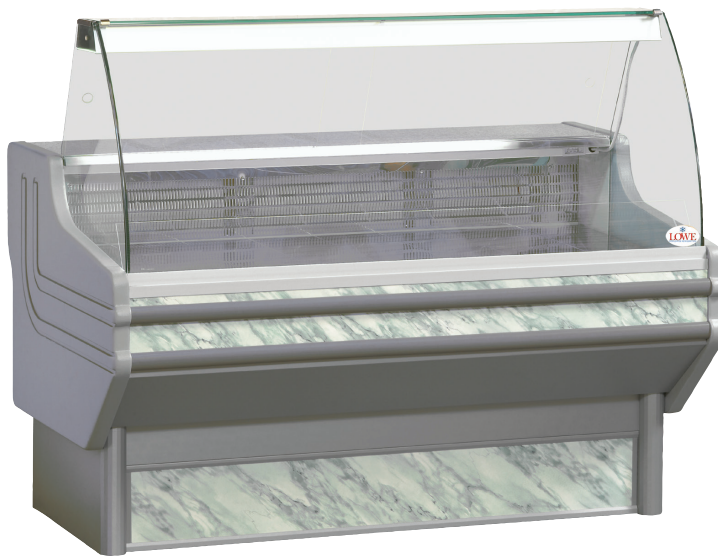
Specifications

Model Numbers

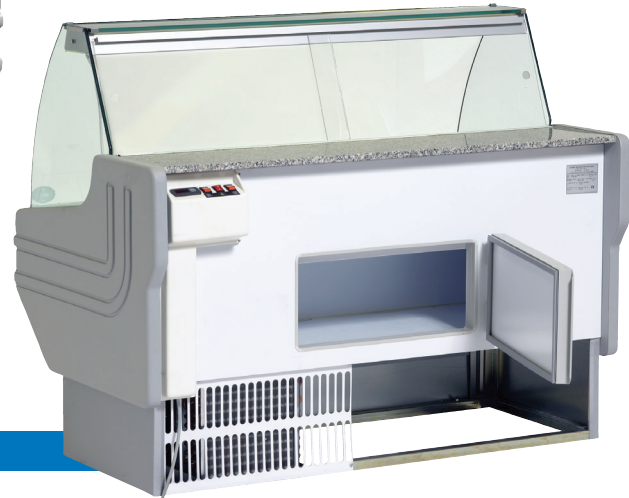
B Corner

Width (inches)	52 ½
Depth (inches)	52 ½
Height (inches)	50 ½
Width without end walls (inches)	50
Display area (square feet)	11 ½
Condensing unit size (HP)	½
Refrigerant	R404
Power supply v/Hz/Ph	120/60/1
Amps	20
Watts	2000
Deck fans	2
Temp Range	34/42°F or 1/6°C
Plug - each unit requires a single dedicated power supply; 24 hour power if keeping product in unit overnight.	

Jinny

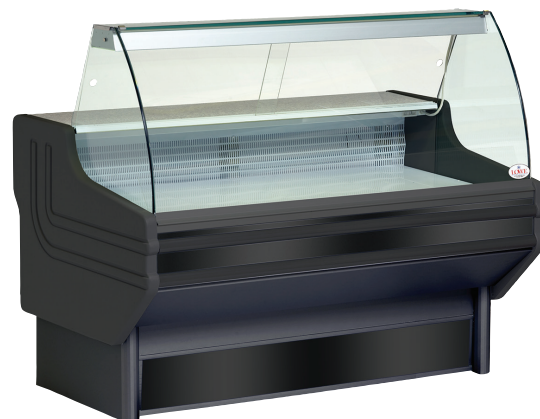


Jinny - Back View



Features

- Bottom hinged glass
- Easy access for loading, setting of display and cleaning
- Simple disassembly for cleaning
- Castors supplied with case
- Euro style front and side glass
- Ice insert for fish display available upon request
- Illuminated stainless steel, display deck
- Rear access to the display for the server
- Under counter refrigerated storage
- Fully self contained unit
- Simple plug in operation
- Granite preparation counter built in
- Easy to clean surfaces and attractive lines
- ABS foamed end walls
- Magnetic door gasket for perfect seal
- Forced air cooling



J-104 & J-150 Also Available In Black

Specifications

Model Numbers

	J104	J150	J250
Width (inches)	41	59	99
Depth (inches)	36 ½	36 ½	36 ½
Height (inches)	50 ½	50 ½	50 ½
Display area (inches)	38 w x 26 ½ d	55 ½ w x 26 ½ d	95 ½ w x 26 ½ d
Display area (square feet)	7	10 ¼	17 ½
Condensing unit size (HP)	1/3	3/8	½
Refrigerant	R404	R404	R404
Power supply v/Hz/Ph	120/60/1	120/60/1	120/60/1
Amps	20	20	20
Watts	2000	2000	2000
Temp Range	34/42°F or 1/6°C	32/42°F or 0/6°C	32/42°F or 0/6°C

Plug - each unit requires a single dedicated power supply; 24 hour power if keeping product in unit overnight.

P360°

Grab & Go Island



Features

- 360° product visibility
- Forced air system
- Castors supplied with case
- Stainless steel deck
- Protective bumpers
- European appearance
- Digital thermostat
- Suitable for all refrigerated products
- Gray bottom panels
- Simple plug in operation
- Ice insert for fish display available upon request

Specifications

Model Number

P360°

Width (inches)	55 ½
Depth (inches)	47
Height (inches)	35
Display area (square feet)	12 ¼
Condensing unit size (HP)	⅓
Refrigerant	R404
Power supply v/Hz/Ph	120/60/1
Amps	20
Watts	2000
Deck fans	2
Temp Range	36/50°F or 2/6°C

Plug - each unit requires a single dedicated power supply; 24 hour power if keeping product in unit overnight.

Oasis

Sealed Deck, Suitable for Ice

Features

- Wooden finish
- Acrylic dome for 360° viewing
- Stainless steel display deck-sealed
- Suitable for ice
- Drain fitted
- Lid is raised electronically
- Self service with lid up
- Display with lid down
- Multipurpose display case
- Smooth finish and appearance
- Fully mobile
- Economical system
- Static evaporation system
- Very rapid pull down time
- Strong construction
- Efficient, quiet system
- Easy to clean surfaces and smooth lines
- Illuminated display
- Fully self contained
- Ozone friendly refrigerant
- Simple plug in operation with simple controls
- Thermostat control
- Operator friendly
- Castors supplied with case
- Spot display



REFRIGERATED

Specifications

Model Numbers

	Oasis 1	Oasis 2
Width (inches)	43	55
Depth (inches)	43	55
Height (inches)	52 closed / 68 raised	52 closed / 68 raised
Display area (square feet)	10 ¼	17 ½
Condensing unit size (HP)	1/3	1/3
Refrigerant	R134	R134
Power supply v/Hz/Ph	120/60/1	120/60/1
Amps	20	20
Watts	2000	2000
Deck fans	2	2
Temp Range	34/42°F or 1/6°C	34/42°F or 1/6°C

Plug - each unit requires a single dedicated power supply; 24 hour power if keeping product in unit overnight.

F2 Chiller



Features

- Modern, state-of-the-art styling
- Wear resistant black vinyl coated steel exterior with all stainless steel countertop and slide lids for lifetime durability
- Heavy duty, long lasting galvanized steel interior
- Front, rear and side venting louvers allow greater condenser air flow for tight fit installations
- Easily accessible and serviceable slide out condensing unit
- Automatic, energy saving, non-electric condensate disposal system with easily accessible, front mounted cleanout drainage hose and drain pan
- High density, non-CFC polyurethane foamed-in-place insulation

Specifications

Model Number

F2 Chiller

Width (inches)	64
Depth (inches)	27 ½
Height (inches)	37
Inside Height (inches)	27
Inside Width (inches)	60
Inside Depth (inches)	20
Storage capacity (cubic feet)	18 ¾
Condensing unit size (HP)	1/3
Refrigerant	R134
Power supply v/Hz/Ph	120/60/1
Amps	20
Watts	2000
Temp Range	34/42°F or 1/6°C
Plug - each unit requires a single dedicated power supply; 24 hour power if keeping product in unit overnight.	

C Series

*Euro Dairy/Deli Merchandiser
Adjustable Shelves*

Features

- Open front – self service grab and go
- Easy access for loading and cleaning
- Excellent vision through attractively styled side glass
- White interior
- Four fully adjustable shelves
- Shelves can be angled
- Extra shelves available upon request
- Peg bars and pegs available upon request
- Energy saving self contained night blind
- Efficient, quiet system
- Castors supplied with case
- Fully self contained unit
- Simple plug in operation with simple controls
- No drain required (hot gas evaporation of defrost water)
- Impact resistant finish
- Pricing rails on each shelf
- Shelf product stoppers available upon request



Specifications

Model Numbers

	C1	C2	C3
Width (inches)	39 ¾	52 ¼	77
Depth (inches)	34	34	34
Height (inches)	84	84	84
Width without end walls (inches)	36 ¾	49 ½	73 ½
Number of shelves	4	4	4
Shelf width x depth (inches)	36 ¾ w x 17 ½ d	49 ½ w x 17 ½ d	73 ½ w x 17 ½ d
Display area (inches)	36 ¾ w x 24 d	49 ½ w x 24 d	73 ½ w x 24 d
Display area (sq.ft.)	18 ¼	24	36 ¼
Condensing unit size (HP)	¾	¾	1 ⅛
Refrigerant	R404	R404	R404
Power supply v/Hz/Ph (unit)	120/60/1	120/60/1	120/60/1
Amps (unit)	20	20	20
Watts (unit)	2000	2000	2000
Deck fans	1	2	3
Temp Range	35/42°F or 2/6°C	35/42°F or 2/6°C	35/42°F or 2/6°C

Plug - each unit requires a single dedicated power supply; 24 hour power if keeping product in unit overnight.

Genova

Open Front Merchandiser

**Increased
Inventory**

Features

- Open front – self service grab and go
- Easy access for loading and cleaning
- White Interior
- Five fully adjustable shelves
- Additional shelves available upon request
- Peg bars and pegs available upon request
- Shelves can be angled
- Energy saving self contained night blind
- Efficient, quiet system
- Castors supplied with case
- Fully self contained unit
- Simple plug in operation with simple controls
- No drain required (hot gas evaporation of defrost water)
- Impact resistant finish
- Pricing rails on each shelf
- Glass or solid end walls
- Shelf product stoppers available upon request



Specifications

Model Numbers

	Genova 1	Genova 2
Width (inches)	40 ½	52 ¾
Depth (inches)	35 ½	35 ½
Height (inches)	86	86
Width without end walls (inches)	37	49 ¼
Number of shelves	5	5
Shelf width and depth (inches)	36 ½ w x 17 ¾ d	49 w x 17 ¾ d
Display area (inches)	36 ½ w x 21 ¾ d	49 w x 21 ¾ d
Display area (square feet)	27 ½	37
Condensing unit size (HP)	1	1
Refrigerant	R404	R404
Power supply v/Hz/Ph (unit)	120/60/1	120/60/1
Amps	20	20
Watts	2000	2000
Deck fans	1	2
Temp Range	35/42°F or 2/6°C	35/42°F or 2/6°C

Plug - each unit requires a single dedicated power supply; 24 hour power if keeping product in unit overnight.

Sara

Open Front Merchandiser

Features

- Open Front – self service grab and go
- Easy access for loading and cleaning
- White interior
- 3 Fully adjustable shelves
- Additional shelves available upon request
- Peg bars and pegs available upon request
- Castors supplied with case
- Energy saving self contained night blind
- Efficient, quiet system
- No drain required
(hot gas evaporation of defrost water)
- Pricing rails on each shelf
- Forced air cooling
- Shelf product stoppers available upon request



Specifications

Model Number

Sara

Width (inches)	52 ½
Depth (inches)	27
Height (inches)	69
Width without end walls (inches)	49
Display area (square feet)	16.88
Top shelf (inches)	49 w x 7 d
Middle shelf (inches)	49 w x 10 d
Bottom shelf (inches)	49 w x 14 d
Bottom Deck (inches)	49 w x 18 ¾ d
Condensing unit size (HP)	¾
Refrigerant	R404
Power supply v/Hz/Ph	120/60/1
Amps	20
Watts	2000
Deck Fans	2
Temp Range	35/42°F or 2/6°C

Plug - each unit requires a single dedicated power supply; 24 hour power if keeping product in unit overnight.

Stella



New

Features

- Open Front – self service grab and go
- Easy access for loading and cleaning
- White interior
- 3 Fully adjustable shelves
- Additional shelves available upon request
- Peg bars and pegs available upon request
- Castors supplied with case
- Energy saving self contained night blind
- Efficient, quiet system
- No drain required
(hot gas evaporation of defrost water)
- Pricing rails on each shelf
- Forced air cooling
- Shelf product stoppers available upon request

Specifications

Model Number

	Stella
Width (inches)	51
Depth (inches)	33 ¼
Height (inches)	71 ¼
Width without end walls (inches)	49 ½
Top shelf	49 ½ w x 12 d
Middle shelf (inches)	49 ½ w x 15 ¾ d
Bottom shelf (inches)	49 ½ w x 19 ¾ d
Bottom Deck (inches)	49 ½ w x 24 ½ d
Display area (square feet)	24 ¾
Condensing unit size (HP)	¾
Refrigerant	R404
Power supply v/Hz/Ph	120/60/1
Amps	20
Watts	2000
Deck fans	1
Temp Range	35° ...42°F or -1° ...+5°C or -1° ...+7°C
Plug - each unit requires a single dedicated power supply; 24 hour power if keeping product in unit overnight.	

Mandy

Open Front Merchandiser

Features

- Automatic defrost
- Castors supplied with case
- Easy to clean surfaces
- Fits through single door
- Forced air cooling
- Fully self contained unit
- Heater pan evaporation (no plumbing required)
- Illuminated top shelf
- Simple plug in operation
- Stainless steel shelves and display deck
- 3 shelves standard
- Energy saving self contained night blind
- Available in Black or White



REFRIGERATED

Specifications

Model Number

Mandy 100

Width (inches)	39 1/2
Depth (inches)	29 3/4
Height inches)	52
Width without end walls (inches)	36 1/2
Top shelf	34 3/4 w x 8 1/4 d
Middle shelf (inches)	34 3/4 w x 10 d
Bottom shelf (inches)	34 3/4 w x 12 d
Bottom Deck (inches)	35 1/4 w x 22 d
Display area (square feet)	13
Condensing unit size (HP)	3/4
Refrigerant	R404
Power supply v/Hz/Ph	120/60/1
Amps	20
Watts	2000
Deck fans	1
Temp Range	35/42°F or 2/6°C
Plug - each unit requires a single dedicated power supply; 24 hour power if keeping product in unit overnight.	

G5

New


Features

- Bottom mount refrigeration system
- 2 Sliding glass doors (front & Back)
- Pass through configuration
- 3 shelves standard
- Fan assisted
- Efficient, quiet system
- Fully adjustable shelves
- Double pane glass doors
- Easy access for loading & cleaning
- white interior

Specifications

Model Number

H3L

Width (inches)	36
Depth (inches)	24
Height (inches)	54
Capacity	15 cu. ft.
Display deck (inches)	32 w x 21¾ d
Display deck (square feet)	5
Condensing unit size (HP)	1/3
Refrigerant	R404
Power supply v/Hz/Ph	20/60/1
Amps	20
Watts	2000
Deck Fans	1
Temp Range	33/41°F or 3/6°C
Plug - each unit requires a single dedicated power supply; 24 hour power if keeping product in unit overnight.	

Memphis



Non-Refrigerated

Features

- Grab and Go refrigerated lower section
- Non refrigerated upper section
- Lockable Castors
- Sliding rear doors on upper section
- Glass shelf in upper section
- Fully mobile
- Smooth end walls
- Available in Black or Bronze
- No drain required
(hot gas evaporation of defrost water)
- Efficient, quiet system

Refrigerated

Specifications

Model Numbers

	Memphis 90	Memphis 120
Width (inches)	35 ½	47 ½
Depth (inches)	32 ¾	32 ¾
Height (inches)	56 ½	56 ½
Display deck (inches)	32 w x 22 d	44 w x 22 d
Display deck (square feet)	5	6 ¾
Condensing unit size (HP)	¼	¼
Refrigerant	R404	R404
Power supply v/Hz/Ph	20/60/1	120/60/1
Amps	20	20
Watts	2000	2000
Deck Fans	1	2
Temp Range	37/42°F or 3/6°C	37/42°F or 3/6°C

Plug - each unit requires a single dedicated power supply; 24 hour power if keeping product in unit overnight.

Isola

Features

- Internal basin in AISI stainless steel
- External in wood or stainless steel
- Gastronorm pans available upon request
- Different configurations available
- Pans available upon request
- Accepts deep or shallow pans
- Static refrigeration system
- Digital control panel
- Electronic lid for ease of loading/serving
- Castors supplied with case
- Serving trays optional
- LED lighting optional



Specifications

Model Numbers

	Isola 4S/S	Isola 6	Isola 6S/S
Width (inches)	59 ¼	81 ¼	86
Depth (inches)	29 ½	29 ½	29 ½
Height (inches) top down	45	45 ¼	45
Height (inches) top up	59	59	59
Condensing unit size (HP)	1/3	1/3	1/3
Refrigerant	R134	R134	R134
Powers supply v/Hz/Ph	120/60/1	120/60/1	120/60/1
Amps	20	20	20
Watts	2000	2000	2000
Temp range	38/50°F or 3/10°C	38/50°F or 3/10°C	38/50°F or 3/10°C

Plug - each unit requires a single dedicated power supply; 24 hour power if keeping product in unit overnight.

Features

- For all chilled food products
- Fully self contained bottom mounted condensing unit
- Efficient, quiet system
- Fan assisted
- Automatic evaporator of defrost water
- Ozone friendly
- White interior and black exterior
- Full length internal vertical lights
- Sturdy handle
- Magnetic door gaskets
- Easy access for loading and cleaning
- Easy clean surfaces
- Illuminated canopy for graphics
- Fully adjustable shelves
- Four shelves per door
- Castors supplied with case
- Minimum maintenance
- Low energy consumption
- Double pane glass door(s)
- Self closing door(s)



G4T

G6T



REFRIGERATED

Specifications

Model Numbers

	G4T	G6T
Width (inches)	30	54 ¼
Depth (inches)	28 ¼	28 ¼
Height (inches)	82 ½	82 ½
Canopy dims (inches)	26 ½ w x 5 ½ h	52 w x 5 ½ h
Shelf width x depth (inches)	23 w x 20 ½ d	23 ½ w x 20 d
Number of shelves	4	8
Condensing unit size (HP)	1/3	1/2
Refrigerant	R134	R134
Power supply v/Hz/Ph (unit)	120/60/1	120/60/1
Amps	20	20
Watts	2000	2000
Temp Range	34/42°F or 1/6°C	34/42°F or 1/6°C

Plug – each unit requires a single dedicated power supply; 24 hour power if keeping product in unit overnight.

K2T / K2TF

K2TF

K2T

Features

- LED lighting
- Anodized gold or silver finish
- Automatic defrost
- Castors supplied with case
- Easy to clean surfaces
- Forced air cooling
- Fully self contained unit
- Glass on four sides
- Heater pan evaporation (no plumbing required)
- Illuminated display
- Rotating glass shelves (K2T) (mirrored bottom shelf)
- Rotation stops when door is opened
- Simple plug in operation

*K2TF: adjustable wire shelf version of K2T.
Shelf size (inches) 17 ½ x 17 ½



Rotating Shelves



Wire Shelves

Specifications

Model Numbers

	K2T	K2TF
Width (inches)	23 ½	23 ½
Depth (inches)	24	24
Height (inches)	71	71
Shelf dimensions (inches)	16 ½ diameter	17 ½ x 17 ½
Number of shelves	6	5
Condensing unit size (HP)	1/3	1/3
Refrigerant	R134	R134
Power supply v/Hz/Ph (unit)	120/60/1	120/60/1
Amps	20	20
Watts	2000	2000
Evaporator fans	1	1
Temp range	35/50°F or 4/10°C	35/50°F or 4/10°C
Plug – each unit requires a single dedicated power supply; 24 hour power if keeping product in unit overnight.		

K3T

Features

- LED lighting
- Anodized gold or silver finish
- Automatic defrost
- Castors supplied with case
- Easy to clean surfaces
- Forced air cooling
- Fully self contained unit
- Glass on six sides (K3T)
- Heater pan evaporation (no plumbing required)
- Illuminated display
- Rotating glass shelves (mirrored bottom shelf)
- Rotation stops when door is opened
- Simple plug in operation



REFRIGERATED

Specifications

Model Number

	K3T
Width (inches)	31 ¾
Depth (inches)	36
Height (inches)	69
Shelf diameter (inches)	22
Number of shelves	5
Condensing unit size (HP)	7/8
Refrigerant	R134
Power supply v/Hz/Ph (unit)	120/60/1
Amps	20
Watts	2000
Evaporator fans	1
Temp range	35/50°F or 4/10°C

Plug – each unit requires a single dedicated power supply; 24 hour power if keeping product in unit overnight.

K2TWR

Features

- Humidity controlled (K2TWCF, K2TWCR)
- Rotating or square glass shelves available
- Beautiful wood finish
- Castors supplied with case
- Economical system
- Glass on all four sides
- All around view of product
- Mirrored bottom shelf
- Adjustable shelves
- Strong construction
- Efficient, quiet system
- Easy to clean surfaces and lines
- Forced air system
- Illuminated display
- Fully self contained unit
- Ozone friendly refrigerant
- Simple plug in operation with simple controls
- Thermostat control
- Operator friendly
- Single door access
- Rotation stops when door is opened



Rotating Shelves

K2TWF



Square Shelves

Specifications

Model Numbers

	K2TWF	K2TWR	K2TWCF	K2TWCR
Application	General	General	Chocolate	Chocolate
Humidity control	No	No	Yes	Yes
Width (inches)	32 ½	32 ½	32 ½	32 ½
Depth (inches)	33 ½	33 ½	33 ½	33 ½
Height (inches)	72	72	72	72
Shelves (square or rotating)	square	Rotating	square	Rotating
Shelf width x depth (inches)	20 ½ w x 22 ½ d	-----	20 ½ w x 22 ½ d	-----
Shelf diameter (inches)	-----	22	-----	22
Number of shelves	5	6	5	6
Condensing unit size (HP)	1/3	1/3	1/3	1/3
Refrigerant	R134	R134	R134	R134
Power supply v/Hz/Ph (unit)	120/60/1	120/60/1	120/60/1	120/60/1
Amps	20	20	20	20
Watts	2000	2000	2000	2000
Evaporator fans	1	1	1	1
Temp Range	35/50°F or 4/10°C	35/50°F or 4/10°C	56/62°F or 14/16°C	56/62°F or 14/16°C
Plug – each unit requires a single dedicated power supply; 24 hour power if keeping product in unit overnight.				

H1

Features

- Storage Chiller
- Weighs 73 lbs



G223

Features

- 23 Liter Total Capacity
- 11.5 Liters Per Bowl
- 6.34 Gallon Total Capacity
- 3.17 Gallons Per Bowl
- Motorized paddles maintain mixing of product



Starlet

Features

- Counter top chiller
- Electronic thermostat
- Weighs 85 lbs



Specifications

Model Numbers

	H1	G223	Starlet
Width (inches)	20 ¾	13 ½	24
Depth (inches)	20 ½	17	23
Height (inches)	32 ¼	25	23
Shelf dimensions (inches)	17 w x 13 d	-----	20 ¾ w x 6 ¾ d
Deck dimensions (inches)	17 ½ w x 9 d	-----	20 ¾ w x 6 ½ d
Condensing unit size (HP)	1/6	1/10	1/8
Refrigerant	R134	R134	R134
Power Supply v/Hz/Ph (unit)	120/60/1	120/60/1	120/60/1
Amps	5	15	10
Watts	500	1500	1000
Deck Fans	-----	-----	yes
Temp Range	35/42°F or 2/6°C	39/61°F or 4/16°C	35/42°F or 2/6°C

Plug - each unit requires a single dedicated power supply; 24 hour power if keeping product in unit overnight.

Prep Counters

Features

- Refrigerated Prep Counter
- Stainless steel finish
- Low energy consumption
- Two storage levels
- Adjustable shelves
- Six poly-carbonate inserts included
- Corrosion resistant white interior finish
- Automatic defrost cycle
- Extra deep removable cutting board
- Lockable castors
- Fully mobile



Specifications

Model Number

	Prep 1	Prep 2
Width (inches)	44 ½	67 ½
Depth (inches)	32 ½	35 ½
Height (inches)	41 ½	41 ½
Storage area (inches)	25 ¼ w x 27 d x 24h	48 w x 27 d x 24 h
Shelf (inches)	24 w x 26 d	23 w x 26 d (x2)
Cutting board dimensions (inches)	44 w x 16 ½ d	67 ½ w x 19 ½ d
Condensing unit size (HP)	⅙	½
Refrigerant	R134	R134
Power supply v/Hz/Ph	120/60/1	120/60/1
Amps	20	20
Watts	2000	2000
Fan assisted	yes	yes
Temperature Range	33.8°/41°F	33.8°/41°F

Plug - each unit requires a single dedicated power supply; 24 hour power if keeping product in unit overnight.

B1P

Features

- Top shelf is non-refrigerated
- Top hinged glass, hydraulic arm support
- Easy access for loading, setting of display and cleaning
- Euro style front and side glass
- Illuminated stainless steel, display deck and glass shelves
- Rear access to the display for the server
- Main display deck is accessed via a stainless steel pull out drawer from the rear of the case. Magnetic gaskets ensure a perfect seal
- Three level display
- Preparation counter built in
- Automatic defrost
- No plumbing required, auto evaporation of defrost water
- Easy to clean surfaces and attractive lines
- Castors supplied with case
- Fully self contained unit
- Simple plug in operation
- ABS foamed end walls
- Forced air system



Back View

Specifications

Model Numbers

	B1P
Width (inches)	50 ½
Depth (inches)	43
Height (inches)	51 ½
Top Shelf size (inches)	46 w x 7 ½ d
Bottom Shelf size (inches)	46 w x 10 d
Drawer dimensions (inches)	37 w x 32 ¾ d
Bottom display area total (inches)	47 w x 32 ¾ d
Condensing unit size (HP)	½
Refrigerant	R404
Power supply v/Hz/Ph	120/60/1
Amps	20
Watts	2000
Temp Range	34/42°F or 1/6°C

Plug - each unit requires a single dedicated power supply; 24 hour power if keeping product in unit overnight.

Kubo 500R
Display Refrigerator

Features

- Adjustable wire shelves
- Hinged doors
- Vertical lights
- Castors supplied with case
- 360° visibility
- Easy to clean
- Automatic defrost
- No drain required
- Stainless steel front



Specifications

Model Number

500R

Width (inches)	60
Depth (inches)	28
Height (inches)	54
Number of shelves	8
Shelf dimensions (inches)	23 ½ w x 15 ¾ d
Condensing unit size (HP)	1 ⅛
Refrigerant	R404
Power supply v/Hz/Ph	120/60/1
Amps	20
Watts	2000
Deck fans	Yes
Temp range	36°/ 50° F or 2°/10° C
Plug - each unit requires a single dedicated power supply; 24 hour power if keeping product in unit overnight.	

Victoria

Features

- Three exhibition levels
- Rear sliding glass doors
- Available in black or stainless finish
- Front access to condensing unit
- Double tempered curved glass
- Castors supplied with case
- Low energy consumption
- Easy to clean
- Automatic defrost cycle
- No drain required
- Stainless steel deck
- Stainless steel front
- Stainless steel shelves
- Static air system
- Wide stainless steel top



Specifications

Model Numbers

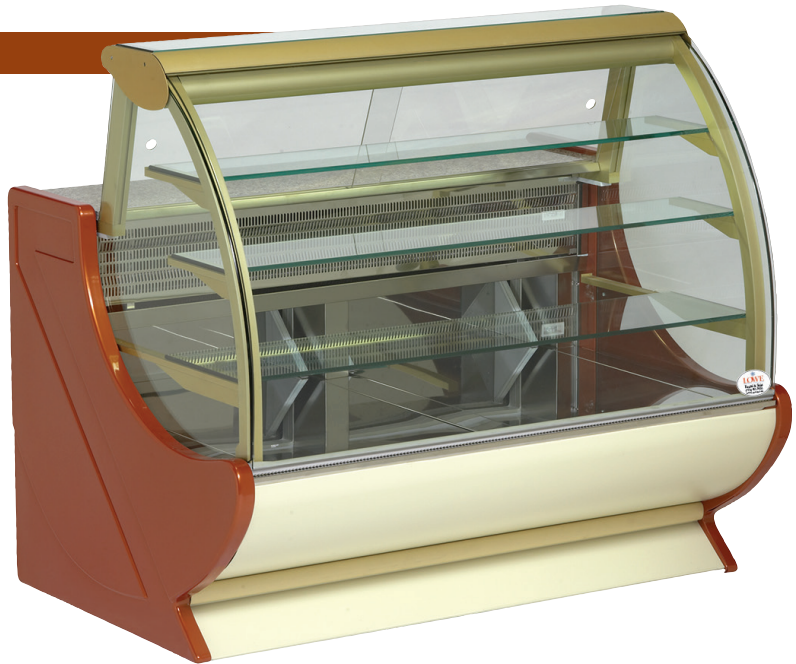
	V-150	V-200
Width (inches)	56 ² / ₃	74
Depth (inches)	36	36
Height (inches)	50	50
Number of shelves	4	4
Top shelf dimensions (inches)	24 ¹ / ₄ w x 15 d	32 ⁷ / ₈ w x 15 d
Other shelf dimensions (inches)	24 ¹ / ₄ w x 17 d	32 ⁷ / ₈ w x 17 d
Condensing unit size (HP)	¹ / ₄	¹ / ₃
Refrigerant	R134A	R134A
Power Supply v/Hz/Ph	120/60/1	120/60/1
Amps	20	20
Watts	2000	2000
Temp Range	33/50°F or 2/10°C	33/50°F or 2/10°C

Plug - each unit requires a single dedicated power supply; 24 hour power if keeping product in unit overnight.`

L Symphony

Features

- Anodized finish
- Top hinged, curved front glass
- Glass ends
- Fixed glass shelves (3)
- Dual temperature zones
- Top two shelves are non refrigerated
- Stainless steel display deck
- Granite preparation counter built in
- Pull out drawers (stainless steel)
- Magnetic gasket on drawers
- European finish and appearance
- Castors supplied with case
- Economical system
- Static evaporator system
- Strong construction
- Efficient, quiet system
- Easy to clean surfaces and lines
- Illuminated display
- Fully self contained unit
- Ozone friendly refrigerant
- Simple plug in operation with simple controls
- Thermostat control
- Operator friendly
- Sliding door access at rear of case for server



Additional Colors Available

Specifications

Model Numbers

	L1	L3	L5
Width (inches)	55 1/4	87	114 1/4
Depth (inches)	40	40	40
Height (inches)	50	50	50
Number of shelves	3	3	3
Top shelf dimensions (inches)	51 w x 8 2/3 d	82 1/2 w x 8 2/3 d	110 w x 8 2/3 d
Middle shelf dimensions (inches)	51 w x 8 2/3 d	82 1/2 w x 8 2/3 d	110 w x 8 2/3 d
Lower shelf dimensions (inches)	51 w x 11 d	82 1/2 w x 11 d	110 w x 11 d
Number of Drawers	2	3	4
Drawer dimensions (inches)	20 3/4 w x 33 3/4 d	20 3/4 w x 33 3/4 d	20 3/4 w x 33 3/4 d
Condensing unit size (HP)	1/4	1/2	1
Refrigerant	R404	R404	R404
Power supply v/Hz/Ph	120/60/1	120/60/1	120/60/1
Amps	20	20	20
Watts	2000	2000	2000
Static Refrigeration	Yes	Yes	Yes
Temp Range	36/50°F or 2/10°C	36/50°F or 2/10°C	36/50°F or 2/10°C

Plug - each unit requires a single dedicated power supply; 24 hour power if keeping product in unit overnight.

L Harmony

Features

- Anodized finish
- Curved front glass
- Glass ends
- Fixed glass shelves (3)
- Glass all around display
- Stainless steel lower display deck
- Sliding glass doors at rear, full size for access
- European appearance
- Castors supplied with case
- Economical system
- Forced air system- uniform cooling on all levels
- Strong construction
- Efficient, quiet system
- Easy to clean surfaces and lines
- Illuminated display (light above each shelf)
- Fully self contained
- Ozone friendly refrigerant
- Simple plug in operation with simple controls
- Thermostat control
- Operator friendly
- No plumbing required



Additional Colors Available

Specifications

Model Numbers

	L1H	L3H	L5H
Width (inches)	37	52 ½	83
Depth (inches)	31 ¼	31 ¼	31 ¼
Height (inches)	54 ½	54 ½	54 ½
Number of shelves	3	3	3
Top shelf dimensions (inches)	35 ½ w x 13 d	51 w x 13 d	81 ½ w x 13 d
Middle shelf dimensions (inches)	35 ½ w x 13 ½ d	51 w x 13 ½ d	81 ½ w x 13 ½ d
Lower shelf dimensions (inches)	35 ½ w x 16 d	51 w x 16 d	81 ½ w x 16 d
Condensing unit size (HP)	¼	½	1
Refrigerant	R404	R404	R404
Power Supply v/Hz/Ph	120/60/1	120/60/1	120/60/1
Amps	20	20	20
Watts	2000	2000	2000
Fan assisted	Yes	Yes	Yes
Temp Range	34/42°F or 1/6°C	34/42°F or 1/6°C	34/42°F or 1/6°C

Plug - each unit requires a single dedicated power supply; 24 hour power if keeping product in unit overnight.

Bodega

Features

- Dual zone built
- Seamless stainless steel door frame with 3 layer glass door
- Electronic thermostat for accurate temperature control
- Temperature setting memory in case of power off
- Fan circulated cool air for even temperature distribution
- LED lighting
- Easy to clean interior
- Efficient, quiet system
- Fully self contained
- Castors supplied with case

New



Bodega Mini

Features

- Seamless stainless steel door frame with 3 layer glass door
- Electronic thermostat for accurate temperature control
- 6 beech wood shelves with stainless steel trim on each shelf
- Fan circulated cool air for even temperature distribution
- LED lighting
- Easy to clean interior
- Efficient, quiet system
- Fully self contained

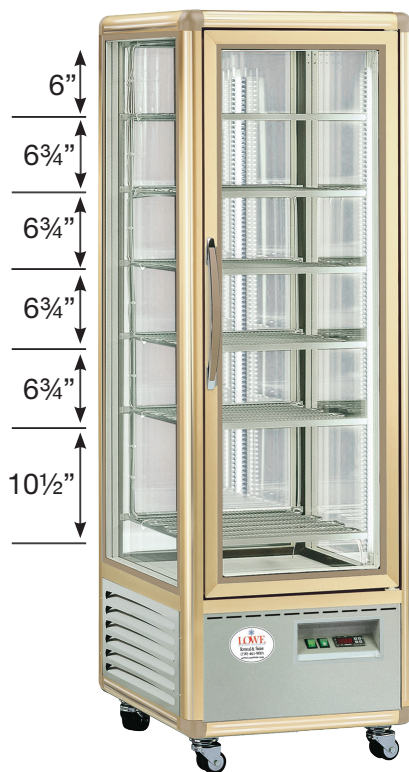


Specifications

Model Numbers

	Bodega	Bodega Mini
Width (inches)	23 ½	23 ¾
Depth (inches)	28	23 ½
Height (inches)	67 ¾	34 ½
Shelf dimensions (inches)	-	-
Deck dimensions (inches)	-	-
Condensing unit size (HP)	1/6	1/6
Refrigerant	R134	R600a
Power Supply v/Hz/Ph (unit)	120/60/1	120/60/1
Amps	20	20
Watts	2000	2000
Deck Fans	yes	yes
Temp Range	41/60°F	5/20°C
Plug - each unit requires a single dedicated power supply; 24 hour power if keeping product in unit overnight.		

K1T
4-Sided
Fixed Shelf Freezer



Features

- Anodized Finish
- Glass on all sides
- All around view of product
- Castors supplied with case
- Economical system
- Fixed evaporator shelves
- Efficient, quiet system
- Digital Thermostat control
- No plumbing required

Also Available In Silver

K4TF
4-Sided
Fixed Shelf Freezer



FROZEN

Specifications

Model Numbers

	K1T	K4TF
Width (inches)	23 1/2	28
Depth (inches)	25 1/2	29 1/2
Height (inches)	71 1/4	70
Number of shelves	6	5
Shelf type	Fixed	Fixed
Condensing unit size (HP)	2/3	3/4
Refrigerant	R404	R404
Power Supply v/Hz/Ph	120/60/1	120/60/1
Amps	20	20
Watts	2000	2000
Fixed shelf evaporator	yes	yes
Temp Range	0/-18°C or 32/0°F	0/-18°C or 32/0°F

Plug - each unit requires a single dedicated power supply; 24 hour power if keeping product in unit overnight.

VV17



Features

- Fully adjustable shelves
- 3 shelves standard
- Digital thermostat control
- Vertical lighting
- No plumbing required
- Efficient, quiet system
- Forced air system

Features

- LED lighting
- Anodized finish
- Glass on all sides
- All around view of product
- Castors supplied with case
- Economical system
- Rotating shelves
- Mirrored bottom shelf
- Adjustable shelves
- Efficient, quiet system
- Forced air system
- Digital thermostat control
- No plumbing required
- Gold finish available

K4T 4-Sided Revolving Shelf Freezer



Specifications

Model Numbers

	VV17	K4T
Width (inches)	36	28
Depth (inches)	26	29 ½
Height (inches)	60 ½	71 ½
Number of shelves	3	6
Shelf type	Adjustable	Revolving
Shelf Dimensions	30 ½ w x 15 ¾ d	18" Diameter
Condensing unit size (HP)	½	¾
Refrigerant	R404	R404
Power Supply v/Hz/Ph	120/60/1	120/60/1
Amps	20	20
Watts	2000	2000
Fan assisted	yes	yes
Temp Range	0/-18°C or 32/0°F	0/-20°C or 32/-4°F

Plug - each unit requires a single dedicated power supply; 24 hour power if keeping product in unit overnight.

Features

- LED lighting
- Fully adjustable shelves
- Frost free
- Triple pane glass doors
- Self closing doors
- Stainless steel bottom
- No plumbing required, evaporator condensing pan included
- Automatic defrost cycle
- Forced air system
- Illuminated display
- Castors supplied with case

**Improved Visibility
and Lighting**



G1T



G6FT

FROZEN

Specifications

Model Number

	G1T	G6FT
Width (inches)	30	54
Depth (inches)	29 ½	29 ½
Height (inches)	83 ¾	83 ¾
Number of shelves	4	4
Shelf dimensions	23 w x 20 ½ d	23 ½ w x 20 d
Number of doors	1	2
Canopy dims (inches)	26 ½ w x 5 ½ h	52 w x 5 ½ h
Condensing unit size (HP)	½	1
Refrigerant	R404	R404
Power supply v/Hz/Ph (unit)	120/60/1	120/60/1
Amps	20	20
Watts	2000	2000
Fan assisted	Yes	Yes
Temp Range	0/-20°C or 28/-4°F	0/-20°C or 28/-4°F

Plug – each unit requires a single dedicated power supply; 24 hour power if keeping product in unit overnight.

E1 / E2*Display Freezer***Features**

- Curved glass front cabinets allow for more product visibility
- 2 sliding glass lids
- Easy access for loading, setting of display and cleaning
- Suitable for all frozen products
- Efficient, quiet system
- Easy to clean surfaces and attractive lines
- Fully self contained unit
- Ozone friendly refrigerant
- Simple plug in operation with simple controls
- Castors supplied with case

**Specifications****Model Number**

	E1	E2
Width (inches)	60	88
Depth (inches)	35 ½	35 ½
Height (inches)	40	40
Condensing unit size (HP)	½	½
Refrigerant	R404	R404
Power Supply v/Hz/Ph	120/60/1	120/60/1
Amps	20	20
Watts	2000	2000
Static Refrigeration	Yes	Yes
Temp Range	0/-22°C or 32/-8°F	0/-22°C or 32/-8°F
Plug - each unit requires a single dedicated power supply; 24 hour power if keeping product in unit overnight.		

Features

- Curved glass front cabinets allow for more product visibility
- 2 sliding glass lids
- Easy access for loading, setting of display and cleaning
- Suitable for all frozen products
- Efficient, quiet system
- Easy to clean surfaces and attractive lines
- Fully self contained unit
- Ozone friendly refrigerant
- Simple plug in operation with simple controls
- Castors supplied with case



E3
Display Freezer

FROZEN

Specifications

Model Number

	E3
Width (inches)	77
Depth (inches)	34
Height (inches)	37
Condensing unit size (HP)	½
Refrigerant	R404
Power Supply v/Hz/Ph	120/60/1
Amps	20
Watts	2000
Static Refrigeration	Yes
Temp Range	0/-22°C or 32/-8°F

Plug - each unit requires a single dedicated power supply; 24 hour power if keeping product in unit overnight.

E4

Display Freezer

Features

- Glass front cabinets allow for more product visibility
- 2 sliding glass lids
- Easy access for loading, setting of display and cleaning
- Suitable for all frozen products
- Efficient, quiet system
- Easy to clean surfaces and attractive lines
- Fully self contained unit
- Ozone friendly refrigerant
- Simple plug in operation with simple controls
- Castors supplied with case



Specifications

Model Number

E4

Width (inches)

77

Depth (inches)

34

Height (inches)

39

Condensing unit size (HP)

1/2

Refrigerant

R404

Power supply v/Hz/Ph

120/60/1

Amps

20

Watts

2000

Static refrigeration

Yes

Temp range

0/-22°C or 32/-8°F

Plug - each unit requires a single dedicated power supply; 24 hour power if keeping product in unit overnight.

D1C

Display Freezer

Features

- 5 baskets standard
- 2 sliding glass lids
- LED lighting
- Easy access for loading, setting of display and cleaning
- Suitable for all frozen products
- Efficient, quiet system
- Easy to clean surfaces and attractive lines
- Fully self contained unit
- Simple plug in operation with simple controls
- Castors supplied with case



FROZEN

Specifications

Model Number

D1C

Width (inches)	58
Depth (inches)	30
Height (inches)	34
Condensing unit size (HP)	1/2
Refrigerant	R134A
Power supply v/Hz/Ph	120/60/1
Amps	20
Watts	2000
Static refrigeration	Yes
Temp range	0/-20°C or 50/-4°F

Plug - each unit requires a single dedicated power supply; 24 hour power if keeping product in unit overnight.

Kubo 500F
Display Freezer

Features

- Adjustable wire shelves
- Hinged doors
- Vertical lights
- Castors supplied with case
- 360° visibility
- Easy to clean
- Automatic defrost
- No drain required
- Stainless steel front



Specifications	Model Number
	500F
Width (inches)	60
Depth (inches)	28
Height (inches)	54
Number of shelves	8
Shelf dimensions (inches)	23 ½ w x 15 ¾ d
Condensing unit size (HP)	1 ⅛
Refrigerant	R404
Power supply v/Hz/Ph	120/60/1
Amps	20
Watts	2000
Deck fans	Yes
Temp range	0/-18°C or 32/0°F
Plug - each unit requires a single dedicated power supply; 24 hour power if keeping product in unit overnight.	

B2F Display Freezer



**Limited Quantity
Available**

Features

- Top hinged glass, hydraulic arm support
- Easy access for loading, setting of display and cleaning
- Euro style front and side glass
- Stainless steel interior
- Rear access to the display for the server
- Preparation counter built in
- Easy to clean surfaces and attractive lines
- Castors supplied with case
- Fully self contained unit
- Simple plug in operation with simple controls
- Impact resistant finish
- ABS foamed end walls

***Note: No Refrigerated Understorage.**

FROZEN

Specifications	Model Number
	B2F
Width (inches)	73 ½
Depth (inches)	43
Height (inches)	51 ½
Condensing unit size (HP)	1
Refrigerant	R404
Power supply v/Hz/Ph	120/60/1
Amp	20
Watts	2000
Deck fans	Yes
Temp range	0/-18°C or 32/0°F

Plug - each unit requires a single dedicated power supply; 24 hour power if keeping product in unit overnight.

F2



Features

- 2 sliding glass lids
- Easy access for loading, setting of display and cleaning
- Excellent vision through top glass
- White interior and exterior
- Suitable for all frozen products
- Efficient, quiet system
- Easy to clean surfaces and attractive lines
- Fully self contained unit
- Ozone friendly refrigerant
- Simple plug in operation with simple controls
- Manual defrost and drain
- One standard basket included
- Impact resistant finish
- Castors supplied with case

Specifications

Model Number

	F2
Width (inches)	47 ¼
Depth (inches)	24 ¾
Height (inches)	34 ¼
Inside width (inches)	42
Inside depth (inches)	20
Inside height (inches)	25
Storage capacity (cubic feet)	12 ¼
Condensing unit size (HP)	¾
Refrigerant	R404
Power supply v/Hz/Ph	120/60/1
Amps	20
Watts	2000
Deck fans	n/a
Temp range	0/-20°C or 32/-4°F
Plug - each unit requires a single dedicated power supply; 24 hour power if keeping product in unit overnight.	

DC8 Dipping Cabinet

New

Features

- Attractive, contemporary design
- 24 gauge painted textured interior and exterior
- Stainless steel serving deck, top and attached superstructure
- Independent on/off compressor and light switch
- Brilliant, interior fluorescent lighting
- Tempered plate glass viewing window
- Holds 9 ½ diameter, 3 gallon cans
- Top and side lid wiper gaskets
- 9 ft. power cord
- 8 dipping wells
- Rear frozen storage
- Heavy-duty epoxy-coated wire can support racks
- Hinged, high-tensile, transparent acrylic dipping compartment lids with full length handle



Specifications

Model Number

	DC8
Width (inches)	47 ¾
Depth (inches)	27 ¾
Height (inches)	50
Condensing unit size (HP)	½
Refrigerant	R134a
Rear door	13¼" h x 16¼" w
Power supply v/Hz/Ph	120/60/1
Amps	20
Watts	2000
Deck fans	Yes
Temp range	5° to -5°F or -15°-21°C

Plug - each unit requires a single dedicated power supply; 24 hour power if keeping product in unit overnight.

G12

Gelato Case

New

Features

- Modern design - high visibility
- Silver color
- Top hinged glass with hydraulic arm support - easy loading
- Stainless steel bins
- Stainless steel front
- LED illuminated front
- Rear night blind
- 12 liter pans
- Auto defrost
- Forced air



Specifications

Model Number

	G12
Width (inches)	48¼
Depth (inches)	47
Height (inches)	54½
Condensing unit size (HP)	¾
Refrigerant	R404
Power supply v/Hz/Ph	220v single phase
Amps	30
Watts	3000
Deck fans	Yes
Temp range	-10°/10°F
Plug - each unit requires a single dedicated power supply; 24 hour power if keeping product in unit overnight.	

SS2P

Two Flavor Soft Serve Ice Cream Machine

Features

- Small foot print, saves valuable floor space
- Easy cleaning and operation
- No installation required, plug it in and it is ready to go
- Castors supplied with case
- Soft serve mix not included
- Sanitized prior to each rental
- Serves two flavors plus a swirl option.
- Overnight switch to keep product refrigerated when not in use
- Automatic shut off when product is low



FROZEN

Specifications

Model Number

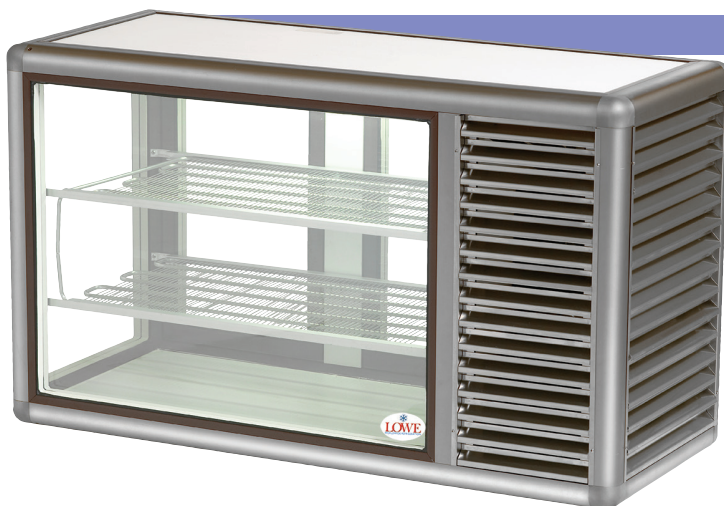
SS2P

Width (inches)	21
Depth (inches)	27 ½
Height (inches)	52
Condensing unit size (HP)	1 ⅛, ⅛
Refrigerant	R404
Power supply v/Hz/Ph	220V single phase
Amps	30
Watts	3000

Plug - each unit requires a single dedicated power supply; 24 hour power if keeping product in unit overnight.

200 GBT

Fixed Shelves



Features

- Gold or silver anodized finish
- Glass walls
- Smooth finish. Rounded corners
- Static evaporator system
- Rapid pull down time
- Strong construction
- Efficient, quiet system
- Easy to clean surface and lines
- Illuminated display
- Fully self contained unit
- Ozone friendly refrigerant
- Simple plug in operation with simple controls
- Operator friendly
- Thermostat control
- Fixed shelves are 7 ¼ inches apart

H4IB

Storage Freezer



Features

- Adjustable shelves
- Glass display
- Counter top unit
- Efficient, quiet system

Specifications

Model Numbers

	200 GBT	H4IB
Width (inches)	47 ½	23 ½
Depth (inches)	19 ½	20 ¼
Height (inches)	28	26 ½
Condensing unit size (HP)	1/3	1/4
Refrigerant	R404	R134
Power supply v/Hz/Ph	120/60/1	120/60/1
Amps	20	20
Watts	2000	2000
Fan assisted	no	yes
Temp range	0/-18°C or 32/0°F	0/-18°C or 32/0°F
Fixed shelf evaporator	yes	no

Plug - each unit requires a single dedicated power supply; 24 hour power if keeping product in unit overnight.



Penguin 1
*Single Bowl
Frozen Drink Display*

Penguin 2
*Double Bowl
Frozen Drink Display*



Features

- One or two bowl frozen drink display
- Full access to all the components for quick and easy maintenance
- Simple bowl removal for easy cleaning
- One compressor for each bowl
- Manual control of the thickness of the drink
- Quick product preparation
- Internal illumination system

H2

Features

- Efficient, quiet system
- Perfect for under counter use



Specifications

Model Numbers

	H2	Penguin 1	Penguin 2
Width (inches)	19 ½	7 ¾	15 ⅓
Depth (inches)	21 ½	17	17
Height (inches)	32 ¾	34 ¼	34 ¼
Bowl capacity in liters	n/a	12	12
Bowl capacity in gallons	n/a	3.17	3.17
Condensing unit size (HP)	¼	¼	½
Refrigerant	R134	R134	R134
Power supply v/Hz/Ph	120/60/1	120/60/1	120/60/1
Amps	20	20	20
Watts	2000	2000	2000
Temp range	0/-18°C or 32/0°F	frozen drinks	frozen drinks

Plug - each unit requires a single dedicated power supply; 24 hour power if keeping product in unit overnight.

Isola 4H

Features

- Electrically raised canopy
- Castors supplied with case
- Divider bars included
- Stainless steel option available
- Adjustable water temperature control
- Fitted drain
- Heat lamps for additional heating
- ‘Low water level’ alarm
- Serving trays optional
- Digital control panel
- Pans available upon request
- Internal basin in AISI stainless steel
- Accepts deep or shallow pans
- Different configurations available
- Gastronorm pans available upon request



Isola 4H
Lid Electronically Lowered.

Specifications

Model Numbers

	Isola 4H	Isola 4HS/S
Width (inches)	56	59 ¼
Depth (inches)	29½	29 ½
Height (inches) top down	45 ¼	45
Height (inches) top up	59	59
Power supply v/Hz/Ph	120/60/1	120/60/1
Amps	30	30
Watts	3000	3000
Temp range	100/194°F or 38/90°C	100/194°F or 38/90°C
Plug - each unit requires a single dedicated power supply.		

B1H

Features

- Top hinged glass, hydraulic arm support
- Easy access for loading, setting of display and cleaning
- Euro style front and side glass
- Illuminated stainless steel, perforated display deck
- Rear access to the display for the server
- Preparation counter built in
- Automatic 'low water level' power cut-off
- Easy to clean surfaces and attractive lines
- Castors supplied with case
- Fully self contained unit
- Rheostat control for heat/light
- Simple plug in operation with simple controls
- Adjustable water temperature control
- Water inlet (½ inch) and drain fitting (1 ½ inch)
- Impact resistant finish
- Stainless steel deck
- ABS foamed end walls
- Divider bars for Gastronorm pans available
- Heating area can be configured several ways using divider bars.
- Heating area dimensions: 42 x 25 ½ (inches)
- Gastronorm pans available upon request



HOT

Specifications

Model Number

B1H

Width (inches)	51
Depth (inches)	43
Height (inches)	51 ½
Power Supply v/Hz/Ph	220/60/1
Amps	30
Watts	3000
Water Temperature Range	167/176°F or 75/80°C
Deck Temperature	146°F or 63°C
Plug - each unit requires a single dedicated power supply.	

BR13H

Features

- 4 Adjustable heated shelves
- Sliding glass rear doors
- Vertical lights
- Castors supplied with case
- No drain required
- Modern design
- 360° visibility
- Stainless steel front
- Stainless steel front
- Easy to clean



Specifications

Model Number

BR13H

Width (inches)	53
Depth (inches)	29 ½
Height (inches)	54 ¼
Top shelf dimensions (inches)	50 w x 11 d
Other shelf dimensions (inches)	50 w x 11 d
Power Supply v/Hz/Ph	120/60/1
Amps	30
Watts	3000
Temperature Range	140/176°F or 60/80°C

Plug - each unit requires a single dedicated power supply.

MCT
4 Burner



Features

- Stainless steel table with electric 4 burner ceramic cook top
- Locking castors included
- Under cabinet storage shelf
- Optional attached mirror for high visibility



MCT
Back View - Under Storage



MCTM
With Mirror

HOT

Specifications

Model Numbers

	MCT	MCTM
Width (inches)	60	60
Depth (inches)	30	30
Height (inches)	38 ½	98 ½
Power Supply v/Hz/Ph	220/60/1	220/60/1
Amps	30	30
Watts	3000	3000

Plug - each unit requires a single dedicated power supply.

CO25
Convection Oven

Features

- Convection oven with two adjustable shelves
- Holds ½ size tray: 18 x 14 ½ (inches) - not included
- Trays for oven available upon request
- Oven is attached to rolling stand
- Oven available without stand
- Rolling stand has six shelves for sheet pans
- Sheet pans for stand available upon request
- Manual 60 minute timer

Specifications

Model Number

CO25

Width (inches)	28 ½
Depth (inches)	28
Height (inches)	53 ¾
Inside width (inches)	18 ½
Inside depth (inches)	14 ½
Inside height (inches)	10 5/8
Power Supply v/Hz/Ph	120/60/1
Amps	20
Watts	2000
Temperature Range	120/480°F or 49/249°C

Plug - each unit requires a single dedicated power supply.



MW
Microwave



Specifications

Model Number

MW

Width (inches)	24
Depth (inches)	18
Height (inches)	14
Power Supply v/Hz/Ph	120/60/1
Amps	10
Watts	1000

Plug - each unit requires a single dedicated power supply.

Top2

Dual burner cook top



Features

- 2 electric burners
- Compact and lightweight

DW

Dual lamp display warmer



Features

- Holds a 12 x 20 (inches) Pan
- Pan not included

Specifications

Model Numbers

	Top2	DW
Width (inches)	22 ½	13
Depth (inches)	14	19
Height (inches)	3	24 ¼
Power Supply v/Hz/Ph	120/60/1	120/60/1
Amps	20	20
Watts	2000	2000

Plug - each unit requires a single dedicated power supply.

200 Hot

(Self Serve) Counter Top



Features

- Warming lamps above each shelf
- Sturdy construction designed for easy access of product
- Self serve open access

Specifications

Model Number

200 Hot

Width (inches)	35 ½
Depth (inches)	21
Height (inches)	28
Power Supply v/Hz/Ph	120/60/1
Amps	15
Watts	1500
Temperature Range	95/160°F or 35/71°C

Plug - each unit requires a single dedicated power supply.

HSD2



Features

- Hard coated aluminum heat shelf
- Tempered glass sides for maximum visibility
- Heavy duty stainless steel construction for base, sides and top
- Thermostat controlled heat for base and rear overhead heat source.

Specifications

Model Number

HSD2

Width (inches)	36
Depth (inches)	28
Height (inches)	29 ¾
Power Supply v/Hz/Ph	120/60/1
Amps	20
Watts	2000

Plug - each unit requires a single dedicated power supply.



I1 / I3
Display Ice Tray

MS12
Electric Meat Slicer
12" Cutting Wheel



200 Dry
Self-Serve Counter Top Display

- Gold or silver anodized finish
- Easy to clean surfaces and lines
- Glass walls
- Multi purpose
- Illuminated display
- Smooth finish
- Rounded corners
- Strong construction
- Simple plug In operation with simple controls

Specifications

Model Numbers

	I1	I3	MS12	200 Dry
Width (inches)	40	64	23	35 ¼
Depth (inches)	22	22	18	21
Height (inches)	7	7	16	28
Power Supply v/Hz/Ph	n/a	n/a	120/60/1	120/60/1
Amps	n/a	n/a	15	5
Watts	n/a	n/a	1500	500

Plug - each unit requires a single dedicated power supply.

NON REFRIGERATED

MSU

Mobile Sink Unit

For Hands and Utensils Only

Features

- Hand sink cart with 2-compartment sink
- Two 5 gallon water tanks
- Two 7 gallon waste water tanks
- 2½ gallon hot water heater
- Soap dispenser and paper towel holder included
- Durable polyethylene construction
- Castors supplied with case



Specifications

Model Number

MSU

Width (inches)	41
Depth (inches)	32 ½
Height (inches)	45 ½
Power Supply v/Hz/Ph	120/60/1
Amps	15
Watts	1500
Fresh water capacity	2 x 5 gallon or 18.92 liters
Waste tank capacity	2 x 7 gallon or 26.49 liters
Plug - each unit requires a single dedicated power supply.	

HWS

Two Person Accessible Hand Washing Station

Features

- 1,408 single uses (22-gallon fresh water capacity; 24-gallon gray water capacity)
- Two 30-ounce soap dispensers and four 250-sheet built-in paper towel dispensers
- Fits inside most portable restrooms for easy transport to job sites
- Built-in lift handles provide added mobility for positioning once on-site.

Specifications

Model Number

HWS

Width (inches)	26 ½
Depth (inches)	21 ½
Height (inches)	61
Fresh water capacity	22 gallon or 83.28 liters
Waste tank capacity	24 gallon or 90.85 liters



PTS

Stainless Steel Prep Table with Shelf



Features

- Stainless steel work surface
- Model with shelf available

PT

Stainless Steel Prep Table



NON REFRIGERATED

Specifications	Model Numbers		
	PT4 / PT4S	PT5 / PT5S	PT6 / PT6S
Width (inches)	48	60	72
Depth (inches)	30	30	30
Height (inches)	35	35	35

Sinks

SSB1



Features

- Stainless steel bowl sink
- Plumbing required
- Single bowl and three bowl sinks available
- Water inlet (1 inch) and drain fitting (1¾ inch)

SSB3



Specifications

Model Numbers

	SSB1	SSB3
Width (inches)	23 ½	84
Depth (inches)	24 ½	24 ½
Height (inches)	40	40

Ready Built Cold Rooms

Features

- “All-Weather” exterior
- Internal light
- Internal “glow in the dark” safety handle
- Easily made mobile
- Refrigerator & freezer temps available
- NSF approved “3-tier” racking included
- Secure, simple temperature control
- Non-slip floor
- Ramp included
- Fork lift friendly
- Lockable door - self closing!
- Strong hinge system
- External gauge displaying box temperature
- Quiet operation of ETL approved condensing unit
- Health and safety code compliant
- Simply hardwire to your generator or existing power!



Specifications

External Width (inches)	94 ¼
External Length (inches)	117 ¾
External Height (inches)	93
Power Supply v/Hz/Ph	220/60/1
Amps	30

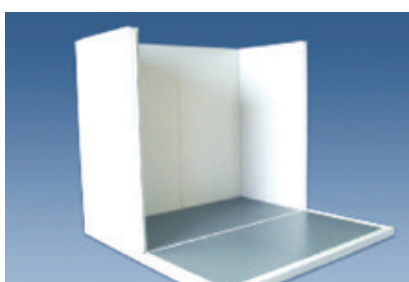
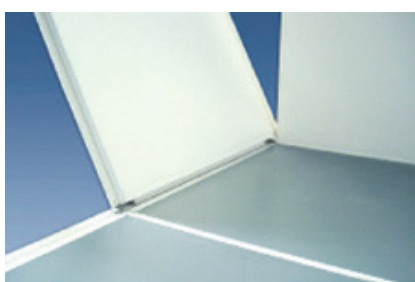
Modular walk-in cold and freezer rooms.



From the world's largest sporting events to state fairs, festivals, care centers, emergency relief, construction renovation, and so much more, LOWE Cold Rooms provide the perfect refrigerated storage solution.

Mobile & remote, climate controlled modular refrigeration / freezer cold rooms engineered for quiet efficiency even in the most challenging environments.

8ft by 8ft Modular Walk-in Cold Room. (smallest size available)
Length can be increased in 2ft increments.
Width can be increased in 8ft increments with interior walls.



Quickly built on-site • Dual temperature • Indoor and outdoor use • Pallet size doors available.

With the largest modular cold room rental fleet in the world, LOWE Refrigeration's extensive logistical program enables us to meet your unique event requirements and ensure successful on time delivery and installation to your event.

Take advantage of our freight savings!

A large number of modular cold rooms can be loaded onto a single trailer.

This creates an efficiency and economy that ready built rooms can't duplicate.



Our steel frame leveling system allows us to place cold rooms almost anywhere, and create efficiency by placing refrigerated storage in convenient locations.



Our quick & efficient on-site build process saves you time and money.



Tie Down Straps can be placed over modular cold rooms to provide extra security in high wind environments. Strapping uses a ratchet and stake system that allows each unit to be pinned in place. This system includes ratchets, pin stakes, stake puller, mid and end straps.

Cold Storage – Where you need it. When you need it.



Build on pristine grass in front of clubhouse.
No forklift needed.



Inside or outside of any structure.
No fumes. Almost silent!



No vehicular access - no problem. Modular cold rooms can be taken through 3ft door to build inside.



Build on a cart path or remote site with ease!

Specifications

Power Requirements 220v / 60Hz / Single Phase / 30 Amp Breaker
(Note: LOWE can supply a splitter box allowing 2 motors to run off a single power supply.)

Drain Not Required

Inside Door Handle Glows in the dark

Strip Curtain Fitted at door entry

Color White

Dimensions	Internal	External
Width (inches)	88	95
Height (inches)	80	87
Length (inches)	88	95

8ft x 8ft is the smallest size available.

Length increases by increments of 2ft. Width increases by increments of 8ft with interior walls.

Call to reserve your customized cold room!

LOWE Modular Cold Room Features & Benefits

LOWE can support events anywhere in North America with modular cold rooms suitable for indoor and outdoor use.

Our modular cold rooms offer a clean, safe and quiet refrigeration/frozen storage option in almost any environment.

- uneven or sloping ground
- on a cart path
- on the beach
- on dirt, grass, gravel or asphalt
- on a platform
- under a bridge
- inside a building
- inside a room
- on a rooftop
- at limited access or remote locations

Chefs and Concessions enjoy having their refrigerated storage when they need it – right next to them!

Our modular cold rooms are also available for beer cooler configuration, a climate controlled preparation, storage room or office.

(Note: Our offices in Europe and Asia provide a similar service.)



Cold Room used for keg storage.



Contact

USA

105 CECIL COURT
FAYETTEVILLE, GEORGIA
30214
1 770 461 9001
1 844 655 1320

HEAD OFFICE

UNIT J, KNOCKMORE
INDUSTRIAL ESTATE,
MOIRA ROAD,
LISBURN
NORTHERN IRELAND
BT28 2EJ
+44 (0) 28 9260 4619

ENGLAND

LOWE RENTAL LTD.
UNIT 37, MARCHINGTON INDUSTRIAL
ESTATE
UTTOXETER, STAFFORDSHIRE
ENGLAND
ST14 8LP
+44 (0) 1283 820 717

SCOTLAND

LOWE RENTAL LTD.
UNIT 1B EXCELSIOR PARK
CANYON ROAD
NETHERTON INDUSTRIAL ESTATE
WISHAW
SCOTLAND
ML2 0EG
44 (0) 16983 72902

DUBAI

DIP 1. BUILDING WO NO.8
DUBAI, UAE
(+971) 4 882 9440

SINGAPORE

7 KAKI BUKIT CRESCENT,
FULLION BUILDING,
#01-01 SINGAPORE 416239.
+65 6284 1552

HONG KONG

LOWE REFRIGERATION LTD.
RM. 11, 14/F, WAH WAI CENTRE,
38-40 AU PUI WAN STREET,
FO TAN, N.T.
HONG KONG
+65 6284 1552

GERMANY

LOWE DEUTSCHLAND GMBH.
HOHLSTUCK 4
56368 KLINGELBACH
GERMANY
+49 (0) 6486 9039 68

ITALY

LOWE ITALIA SRL.
MILANO
ITALY
+39 023 6000 121

SPAIN

LOWE RENTAL LTD.
BARCELONA
SPAIN
+34 9 3800 1963



loweusa.com