



LOWE

WORLDWIDE RENTAL SPECIALISTS

Refrigeration & Catering Equipment Rental Catalog



+44 (0)28 9260 4619



Search: Lowe Rental



mail@lowerental.com



We Are Lowe.

Lowe Rental is a global, innovative, ambitious and award winning refrigeration and catering equipment company. Established in 1977, Lowe has grown to be the largest globally recognised equipment company for the retail, exhibitions and events markets.

Lowe Rental innovates in every aspect of its business. Developing first to market solutions for refrigeration, such as customisable long-term rental, in a cost conscious and environmentally sensitive retail environment ensures Lowe remains a global pioneer.

Content

Display Chillers	04
Storage Chillers	23
Display Freezers	27
Storage Freezers	37
Cold Rooms	43
Temporary Kitchens	46
Warewashing Units	50
Catering Equipment - Electric	52
Catering Equipment - Gas	56
Extractors	60
Convection Ovens	62
Table Top Appliances	62
Hot Holding Equipment	68
Preparation Equipment	71
Coffee and Drinks	76
Water Heaters	79
Sinks	80
Dish and Glass Washers	82
Gas Accessories	84
GN Diagram	85

A Series

Serve-Over Counter

At a Glance

Model	A1P	A2P	A3P	A4P
Dimensions (WxDxH) mm	1290x955x1270	1890x955x1270	2485x955x1270	3090x955x1270
Volume (L)	286	429	572	715
Electrical Requirements (Watts)	447	667	923	1272
Electrical Requirements (Running Amps)	1.86	2.78	3.85	5.30
Display Area	0.83 m ²	1.25 m ²	1.65 m ²	2.1 m ²
Temperature Range	-1...+7 °C	-1...+7 °C	-1...+7 °C	-1...+7 °C
Cooling Type	Fan	Fan	Fan	Fan
Defrost Type	Automatic	Automatic	Automatic	Automatic
Lighting	Yes	Yes	Yes	Yes
Castors	Yes	Yes	Yes	Yes
Dual Temperature	No	No	No	No

Features

Italian design fan assisted serve-over counter with refrigerated under-counter storage

- Temperature display
- Stainless steel back shelf
- Ice trays available on request

At a Glance

Model	A1LG	A2LG	A3LG
Dimensions (WxDxH) mm	1290x955x970	1890x955x970	2485x955x970
Volume (L)	140	170	227
Electrical Requirements (Watts)	447	667	923
Electrical Requirements (Running Amps)	1.86	2.78	3.85
Display Area	0.83 m ²	1.25 m ²	1.65 m ²
Temperature Range	-1...+7 °C	-1...+7 °C	-1...+7 °C
Cooling Type	Fan	Fan	Fan
Defrost Type	Automatic	Automatic	Automatic
Lighting	No	No	No
Castors	Yes	Yes	Yes
Dual Temperature	No	No	No



AC Series

Serve-Over Display Counter

At a Glance

Model	A1C	A2C
Dimensions (WxDxH) mm	1280x975x1285	1800x975x1285
Volume (L)	387	580
Electrical Requirements (Watts)	750	1000
Electrical Requirements (Running Amps)	3.13	4.17
Display Area	0.785 m ²	1.177 m ²
Temperature Range	0...+5°C	0...+5°C
Cooling Type	Fan	Fan
Defrost Type	Automatic	Automatic
Lighting	Yes	Yes
Castors	Yes	Yes
Dual Temperature	No	No

Features

Fan assisted serve-over counter with under-counter storage

- Ventilated
- Rear doors



B Series

Serve-Over Display Counter

At a Glance

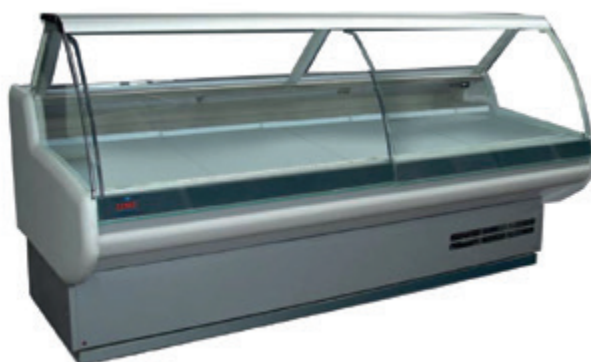
Model	B1P	B2P	B3P
Dimensions (W×D×H) mm	1280×1100×1350	1880×1100×1350	2480×1100×1350
Electrical Requirements (Watts)	500	1000	1500
Electrical Requirements (Running Amps)	2.08	4.17	6.25
Display Area	1.02 m ²	1.53 m ²	2.04 m ²
Temperature Range	-1...+5°C	-1...+5°C	-1...+5°C
Cooling Type	Fan	Fan	Fan
Defrost Type	Automatic	Automatic	Automatic
Lighting	Yes	Yes	Yes
Castors	Yes	Yes	Yes
Dual Temperature	No	No	No



Features

Italian design fan assisted serve-over counter with refrigerated under-counter storage

- Large stainless steel display deck
- Electromechanical controller
- Curved front glass with hydraulic hinge system



B Corner

Serve-Over Corner Display Counter

At a Glance

Model	B1C
Dimensions (W×D×H) mm	1970×1070×1345
Electrical Requirements (Watts)	500
Electrical Requirements (Running Amps)	2.08
Display Area	0.84 m ²
Temperature Range	0...+6°C
Cooling Type	Fan
Defrost Type	Automatic
Lighting	Yes
Castors	Yes
Dual Temperature	No



Features

Italian design fan assisted serve-over corner section

- Curved front glass with hydraulic hinge system
- 90° corner
- Large stainless steel display deck
- Ice trays available on request



Fish Counter

Serve-Over Display Counter

At a Glance

Model	FC15	FC20	FC30
Dimensions (WxDxH) mm	1540x1140x1170	2020x1140x1170	2980x1140x1170
Electrical Requirements (Watts)	500	1000	2000
Electrical Requirements (Running Amps)	2.08	4.17	8.33
Display Area	1.4 m ²	1.86 m ²	2.79 m ²
Temperature Range	-1...+2°C	-1...+2°C	-1...+2°C
Cooling Type	Static	Static	Static
Defrost Type	Manual	Manual	Manual
Lighting	No	No	No
Castors	No	No	No
Dual Temperature	No	No	No

Features

Italian fresh fish serve-over display counter in stylish stainless steel finish

- Temperature display
- Large stainless steel display deck
- Electromechanical controller
- Curved front glass
- On pedestals



Panarea

Island Grab 'n' Go Cabinet

At a Glance

Model	A1Pano
Dimensions (WxDxH) mm	1300x1120x900
Electrical Requirements (Watts)	450
Electrical Requirements (Running Amps)	1.88
Display Area	1.13 m ²
Temperature Range	-1...+7°C
Cooling Type	Fan
Defrost Type	Automatic
Lighting	No
Castors	Yes
Dual Temperature	No

Features

Refrigerated island promotional display cabinet suitable for a wide range of display requirements

- Temperature display
- Reach-in cabinet



E6A

Dual Temp Wall Site Display Chiller/Freezer

At a Glance

Model	E6A
Dimensions (WxDxH) mm	740×778×1120
Volume (L)	160
Electrical Requirements (Watts)	890
Electrical Requirements (Running Amps)	3.71
Temperature Range	-1...+5°C / -18...-20°C
Cooling Type	Fan
Defrost Type	Automatic
Lighting	Yes
Castors	Yes
Dual Temperature	Yes

Features

Italian wall site chiller/freezer promotional display case

- Glazed to three sides
- Colour: stone / grey
- Illuminated canopy for advertising



D Series

Dual Temp Open Top Display Chiller/Freezer

At a Glance

Model	D3	D4
Dimensions (WxDxH) mm	1545×1005×1000	2040×1005×1000
Volume (L)	110	152
Electrical Requirements (Watts)	1000	1200
Electrical Requirements (Running Amps)	4.17	5.00
Display Area	1.12 m ²	1.55 m ²
Temperature Range	-20...+5°C	-20...+5°C
Cooling Type	Fan	Fan
Defrost Type	Automatic	Automatic
Lighting	Yes	Yes
Castors	Yes	Yes
Dual Temperature	Yes	Yes

Features

Island display chiller/freezer

- Temperature display
- Bumper bar
- Part glazed sides
- Night covers are available



K1

Dual Temp Display Chiller/Freezer

At a Glance

Model	K1
Dimensions (W×D×H) mm	595×658×1805
Volume (L)	400
Electrical Requirements (Watts)	1057
Electrical Requirements (Running Amps)	4.40
Temperature Range	-18...+5°C
Cooling Type	Fan
Defrost Type	Automatic
Lighting	Yes
Castors	Yes
Dual Temperature	Yes
Shelves	5

Features

Vertical showcase 4 sided display chiller/freezer

- Frost free
- Glazed all four sides
- Adjustable shelves
- Colour: stainless steel and silver aluminium finish



K1R / K2R

Dual Temp Display Chiller/Freezer

At a Glance

Model	K1R / K2R
Dimensions (W×D×H) mm	600×650×1800
Volume (L)	350
Electrical Requirements (Watts)	500
Electrical Requirements (Running Amps)	2.08
Temperature Range	-18...+5°C
Cooling Type	Fan
Defrost Type	Automatic
Lighting	Yes
Castors	Yes
Dual Temperature	Yes
Shelves	6

Features

4 sided display chiller/freezer

- Electronically controlled
- Temperature display
- Glazed all four sides
- Adjustable rotating glass shelves
- Colour: stainless steel and aluminium finish



K4

Dual Temp Hexagonal Display Chiller/Freezer

At a Glance

Model	K4
Dimensions (WxDxH) mm	915x855x1825
Volume (L)	600
Electrical Requirements (Watts)	1000
Electrical Requirements (Running Amps)	4.17
Temperature Range	-18...+5°C
Cooling Type	Fan
Defrost Type	Automatic
Lighting	Yes
Castors	Yes
Dual Temperature	Yes
Shelves	5

Features

Italian 6 sided chiller/freezer with hinged door

- Shelf dimension: 560mm
- Temperature display
- Glazed all six sides
- Adjustable, removable and rotating glass shelves
- Rotation switch
- Colour: stainless steel and silver aluminium finish



L1S

Dual Temp Bakery Display Counter

At a Glance

Model	L1S
Dimensions (WxDxH) mm	1340x720x1370
Volume (L)	550
Electrical Requirements (Watts)	870
Electrical Requirements (Running Amps)	3.63
Temperature Range	-18...+5°C
Cooling Type	Fan
Defrost Type	Automatic
Lighting	Yes
Castors	Yes
Dual Temperature	Yes
Shelves	2

Features

Italian double glazed curved glass bakery and patisserie display counter on castors for easy movement

- Anti-mist glass
- Rear sliding doors
- Stainless steel bottom display deck



L1F

Dual Temp Display Chiller/Freezer

At a Glance

Model	L1F
Dimensions (WxDxH) mm	1340x720x1370
Electrical Requirements (Watts)	2000
Electrical Requirements (Running Amps)	8.33
Temperature Range	-18...+5°C
Cooling Type	Fan
Defrost Type	Automatic
Lighting	Yes
Castors	Yes
Dual Temperature	Yes
Shelves	2

Features

Italian curved glass chiller/freezer display counter on castors for easy movement

- Double glazed curved front glass
- Stainless steel bottom display deck
- Glass shelves
- Temperature display
- Anti-mist glass
- Rear sliding doors
- Electronically controlled



Crystal Series

Refrigerated Patisserie Display Case

At a Glance

Model	L1C/100	L1C/120	L1C/150
Dimensions (WxDxH) mm	1000x750x1430	1200x750x1430	1500x750x1430
Electrical Requirements (Watts)	450	550	600
Electrical Requirements (Running Amps)	1.88	2.29	2.50
Display Area	1.60 m ²	1.92 m ²	2.45 m ²
Temperature Range	+2...+8°C	+2...+8°C	+2...+8°C
Cooling Type	Fan	Fan	Fan
Defrost Type	Automatic	Automatic	Automatic
Lighting	Yes	Yes	Yes
Castors	Yes	Yes	Yes
Dual Temperature	No	No	No
Shelves	3	3	3

Features

Stylish curved glass refrigeration patisserie display counter with a stainless steel finish

- Self-closing rear sliding doors
- Adjustable glass shelves
- Glass fronted



N2C

Refrigerated Counter Top Display Case

At a Glance

Model	N2C
Dimensions (WxDxH) mm	700x560x670
Electrical Requirements (Watts)	220
Electrical Requirements (Running Amps)	1.5
Temperature Range	+2...+8°C
Cooling Type	Fan
Defrost Type	Automatic
Lighting	Yes
Castors	Yes
Dual Temperature	No
Shelves	2

Features

Italian curved glass freezer display counter with castors for easy movement

- Fixed shelves
- Digital controller and temperature display
- Double glazed glass
- Rear sliding doors to display area



N2K

Refrigerated Counter Top Display Cabinet

At a Glance

Model	N2K
Dimensions (WxDxH) mm	810x428x386
Electrical Requirements (Watts)	164
Electrical Requirements (Running Amps)	1.3
Temperature Range	+2...+12°C
Cooling Type	Fan
Defrost Type	Automatic
Lighting	Yes
Castors	No
Dual Temperature	No
Shelves	2

Features

Compact counter top refrigerated display cabinet with self service style door and stylish illuminated interior

- Adjustable feet
- Digital controller and temperature display



Meat Dry Ager

Single and Double Door Dry Aging Units

At a Glance

Model	Single Door	Double Door
Dimensions (W×D×H) mm	795×730×2005	1542×730×2005
Volume (L)	550	1150
Electrical Requirements (Watts)	700	900
Electrical Requirements (Running Amps)	2.92	3.75
Temperature Range	+1...+2°C	+1...+2°C
Cooling Type	Fan	Fan
Defrost Type	Automatic	Automatic
Lighting	Yes	Yes
Castors	Yes	Yes
Dual Temperature	No	No
Shelves	3	3

Features

Dry aging unit with electronic humidity control

- Electronic control panel
- Stainless steel wire shelves with adjustable height
- Rails and hooks available upon request
- Night blind not available



M Series

Dome Display Chiller

At a Glance

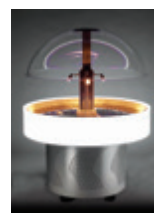
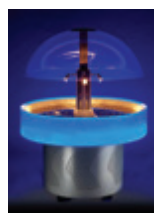
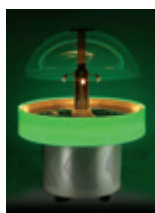
Model	M1	M2	M2 LED
Dimensions (dia. × H) mm	dia.1470×1520	dia. 1110×1350	dia. 1300×1350
Electrical Requirements (Watts)	900	800	1000
Electrical Requirements (Running Amps)	3.75	3.33	4.17
Volume (L)	230	90	90
Display Area	1.8 m ²	0.9 m ²	0.9 m ²
Temperature Range	+2...+10°C	+2...+10°C	+2...+10°C
Cooling Type	Fan	Fan	Fan
Defrost Type	Automatic	Automatic	Automatic
Lighting	No	No	Yes
Castors	No	No	No
Dual Temperature	No	No	No



Features

The ultimate refrigeration centre piece for a high impact display from Showmaster

- Temperature display
- Perspex dome with electronic operation for lifting
- Stainless steel perforated display shelves



M Series

Wooden Finish Display Chiller

At a Glance

Model	M3	M4
Dimensions (dia. x H) mm	dia.1395×1319	dia.1075×1319
Electrical Requirements (Watts)	2000	2000
Electrical Requirements (Running Amps)	8.33	8.33
Temperature Range	-1 ... +10°C	-1 ... +10°C
Display Area	1.3 m ²	0.8 m ²
Cooling Type	Fan	Fan
Defrost Type	Automatic	Automatic
Lighting	Yes	Yes
Castors	Yes	Yes
Dual Temperature	No	No

Features

The ultimate refrigerated centre piece for a high impact display in wooden finish with cover

- Temperature display
- Stainless steel display deck
- Perspex dome with electronic operation for lifting



CT Series

Multi-Deck Display Case

At a Glance

Model	C1T	C2T	C3T
Dimensions (W×D×H) mm	1017×870×2070	1330×870×2070	1955×870×2070
Electrical Requirements (Watts)	929	1155	1460
Electrical Requirements (Running Amps)	3.87	4.81	6.08
Display Area	1.40 m ²	1.90 m ²	2.90 m ²
Temperature Range	-1...+5°C	-1...+5°C	-1...+5°C
Cooling Type	Fan	Fan	Fan
Defrost Type	Automatic	Automatic	Automatic
Lighting	Yes	Yes	Yes
Castors	Yes	Yes	Yes
Dual Temperature	No	No	No
Shelves	4	4	4

Features

Attractive multi-deck display cabinet with adjustable shelves

- Panoramic end walls
- Manual night blind
- Electronically controlled
- Digital temperature display



CLT Series

Multi-Deck Display Case

At a Glance

Model	C1LT	C2LT	C3LT
Dimensions (WxDxH) mm	1017×860×1700	1330×860×1700	1955×860×1700
Electrical Requirements (Watts)	816	929	1155
Electrical Requirements (Running Amps)	3.40	3.87	4.81
Display Area	1.71 m ²	2.28 m ²	3.41 m ²
Temperature Range	-1...+7°C	-1...+7°C	-1...+7°C
Cooling Type	Fan	Fan	Fan
Defrost Type	Automatic	Automatic	Automatic
Lighting	Yes	Yes	Yes
Castors	Yes	Yes	Yes
Dual Temperature	No	No	No
Shelves	3	3	3



Features

Italian style low height promotional multi-deck display cabinet

- Night blind
- Ticket strips and risers available upon request



C2R

Multi-Deck Display Case

At a Glance

Model	C2R
Dimensions (WxDxH) mm	1200×655×2000
Electrical Requirements (Watts)	2500
Electrical Requirements (Running Amps)	10.42
Display Area	2.07 m ²
Temperature Range	-1...+7°C
Cooling Type	Fan
Defrost Type	Automatic
Lighting	Yes
Castors	Yes
Dual Temperature	No
Shelves	5



Features

Stainless steel multi-deck display case with fully glazed end panels and two hinged rear doors

- Electronically controlled
- Digital temperature display
- Night blind
- Adjustable (height and angle) shelves and base
- Ticket strips on shelves
- Perspex shelf risers



C2-SD Series

Multi-Deck Display Case

At a Glance

Model	C2-SD60/120	C2-SD75/120	C2-SD75/125
Dimensions (W×D×H) mm	1200×600×2000	1200×750×2000	1250×750×1980
Electrical Requirements (Watts)	2500	2500	2500
Electrical Requirements (Running Amps)	10.42	10.42	10.42
Temperature Range	-1...+7°C	-1...+7°C	-1...+7°C
Display Area	2.07 m ²	2.81 m ²	2.92 m ²
Cooling Type	Fan	Fan	Fan
Defrost Type	Automatic	Automatic	Automatic
Lighting	Yes	Yes	Yes
Castors	Yes	Yes	Yes
Dual Temperature	No	No	No
Shelves	4*	4*	4*

Features

Stainless steel multi-deck display case with fully glazed end panels

- Electronically controlled
- Digital temperature display
- Night blind
- Adjustable (height and angle) shelves and base
- Ticket strips on shelves
- Perspex shelf risers



*Unit provided with 4 shelves only



G1S

Dual Temp Glass Door Chiller/Freezer

At a Glance

Model	G1S
Dimensions (W×D×H) mm	670×760×1930
Volume (L)	400
Electrical Requirements (Watts)	500
Electrical Requirements (Running Amps)	2.08
Temperature Range	-25...+5°C
Cooling Type	Fan
Defrost Type	Automatic
Lighting	Yes
Castors	Yes
Dual Temperature	Yes
Shelves	5

Features

Upright single glass door chiller/freezer with hinged door and lockable castors for easy movement

- Long handle
- Adjustable shelves



G4

Glass Door Chiller

At a Glance

Model	G4
Dimensions (WxDxH) mm	600x635x1950
Volume (L)	380
Electrical Requirements (Watts)	750
Electrical Requirements (Running Amps)	3.13
Temperature Range	0...+10°C
Cooling Type	Fan
Defrost Type	Automatic
Lighting	Yes
Castors	Yes
Dual Temperature	No
Shelves	5

Features

Upright single glass door chiller with hinged door and lockable castors for easy movement

- Self-closing door
- Food safe plastic interior
- Plastic coated shelves
- Integrated grab handle



G7, G7XXL

Dual Temp Double Glass Door Chiller/Freezer

At a Glance

Model	G7	G7XXL
Dimensions (WxDxH) mm	1320x760x1930	1320x890x1930
Volume (L)	1007	1270
Electrical Requirements (Watts)	1000	1400
Electrical Requirements (Running Amps)	4.17	5.83
Temperature Range	-25...+5°C	-25...+5°C
Cooling Type	Fan	Fan
Defrost Type	Automatic	Automatic
Lighting	Yes	Yes
Castors	Yes	Yes
Dual Temperature	Yes	Yes
Shelves	5	5

Features

Upright double glass door chiller/freezer with hinged door and lockable castors for easy movement

- Self-closing heated door
- Robust construction
- Food safe plastic interior



G8S

Dual Temp Triple Glass Door Chiller/Freezer

At a Glance

Model	G8S
Dimensions (WxDxH) mm	1970x760x1950
Volume (L)	1880
Electrical Requirements (Watts)	1500
Electrical Requirements (Running Amps)	6.52
Temperature Range	-25...+5°C
Cooling Type	Fan
Defrost Type	Automatic
Lighting	Yes
Castors	Yes
Dual Temperature	Yes
Shelves	5

Features

Upright triple glass door chiller/freezer with hinged doors and lockable castors for easy movement

- Electronic control
- Robust construction
- Food safe plastic interior



G4WS

Wine Display Chiller

At a Glance

Model	G4WS
Dimensions (WxDxH) mm	590x560x1460
Electrical Requirements (Watts)	1000
Electrical Requirements (Running Amps)	4.17
Temperature Range	+5...+18°C
Cooling Type	Fan
Defrost Type	Automatic
Lighting	Yes
Castors	No
Dual Temperature	No
Shelves	14

Features

Attractive black wine display chiller cabinet with two independently controlled compartments

- Double glazed display door
- 14 wooden shelves (7 in upper compartment and 7 + 1 half shelf in bottom compartment)
- Integrated grab handle
- Reversible door
- Capacity: 154x75cl bottles



H3R

Back Bar Chiller

At a Glance

Model	H3R
Dimensions (WxDxH) mm	600x500x900
Volume (L)	140
Electrical Requirements (Watts)	500
Electrical Requirements (Running Amps)	2.08
Temperature Range	+2...+7°C
Cooling Type	Fan
Defrost Type	Manual
Lighting	Yes
Castors	No
Dual Temperature	No
Shelves	2

Features

Single door under counter back bar chiller

- Self-closing door
- Hammered aluminium interior
- Adjustable shelves
- Metal door frame with metal door handle
- Colour: Black
- Capacity: 104x330ml bottles



H3DD

Double Door Back Bar Chiller

At a Glance

Model	H3DD
Dimensions (WxDxH) mm	900x510x885
Volume (L)	705
Electrical Requirements (Watts)	1000
Electrical Requirements (Running Amps)	4.17
Temperature Range	+2...+7°C
Cooling Type	Fan
Defrost Type	Off Cycle
Lighting	Yes
Castors	No
Dual Temperature	No
Shelves	2

Features

Double door under counter back bar chiller

- Self-closing door
- Adjustable shelves
- Adjustable feet at front and rollers at rear
- Sliding or hinged door (according to availability)



H3W

Half Height Wine Display Chiller

At a Glance

Model	H3W
Dimensions (WxDxH) mm	600x610x860
Volume (L)	125
Electrical Requirements (Watts)	500
Electrical Requirements (Running Amps)	2.08
Temperature Range	+4...+12°C
Cooling Type	Fan
Defrost Type	Automatic
Lighting	Yes
Castors	No
Dual Temperature	No
Shelves	2

Features

Attractive half height black wine display chiller cabinet

- Adjustable shelves
- Double glazed door
- Low energy consumption
- Capacity: 50x75cl bottles



H4

Table Top Wine Display Chiller

At a Glance

Model	H4
Dimensions (WxDxH) mm	430x460x503
Volume (L)	17
Electrical Requirements (Watts)	150
Electrical Requirements (Running Amps)	0.43
Temperature Range	+4...+16°C
Cooling Type	Static
Defrost Type	Manual
Lighting	Yes
Castors	No
Dual Temperature	No
Shelves	2

Features

Specialised wine unit for red wine, white wine, sparkling and champagne

- Low noise level
- Capacity: 17x75cl bottles



H3N

Back Bar Chiller

At a Glance

Model	H3N
Dimensions (WxDxH) mm	500x580x772
Volume (L)	95
Electrical Requirements (Watts)	500
Electrical Requirements (Running Amps)	2.08
Temperature Range	+2...+7°C
Cooling Type	Static
Defrost Type	Off Cycle
Lighting	Yes
Castors	No
Dual Temperature	No
Shelves	3

Features

Single door under counter back bar chiller

- Self-closing door
- Adjustable shelves
- Capacity: 104x330ml bottles
- Colour: white



N3W

Table Top Wine Display Chiller

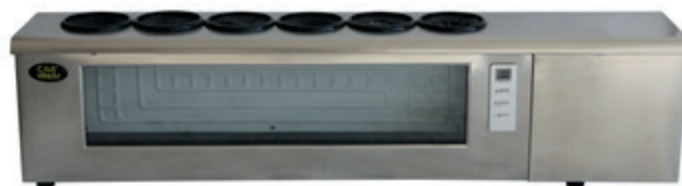
At a Glance

Model	N3W
Dimensions (WxDxH) mm	800x190x332
Volume (L)	13
Electrical Requirements (Watts)	80
Electrical Requirements (Running Amps)	0.33
Temperature Range	+4...+16°C
Cooling Type	Fan
Defrost Type	Off Cycle
Lighting	No
Castors	No
Dual Temperature	No
Shelves	2

Features

Specialised wine unit with anti-drip shelves

- Low noise level
- Capacity: 6x75cl bottles



H3WT

Half Height Wine Display Chiller

At a Glance

Model	H3WT
Dimensions (WxDxH) mm	595x570x820
Volume (L)	141
Electrical Requirements (Watts)	160
Electrical Requirements (Running Amps)	0.67
Temperature Range	+5...+18°C
Cooling Type	Fan
Defrost Type	Automatic
Lighting	Yes
Castors	No
Dual Temperature	No
Shelves	3



Features

Single door, under counter wine chiller suitable for red or white wine

- Adjustable shelves
- Adjustable feet
- Digital controller and temperature display
- Tinted glass door to protect wine from UV rays
- Charcoal filter to help remove odours and protect wine
- Capacity: 42x75cl bottles
- Stainless steel door frame
- Slide out wooden shelves



G4WT

Black Glass Door Wine Chiller

At a Glance

Model	G4WT
Dimensions (WxDxH) mm	595x680x1760
Volume (L)	370
Electrical Requirements (Watts)	220
Electrical Requirements (Running Amps)	0.92
Temperature Range	+5...+12 and +12...+18°C
Cooling Type	Fan
Defrost Type	Automatic
Lighting	Yes
Castors	No
Dual Temperature	No
Shelves	13



Features

Single door wine display chiller cabinet, specially designed with two separate refrigerated sections to store red and white wine at the correct temperature

- Lockable door
- Adjustable shelves
- Adjustable feet
- Digital controller and temperature display
- Tinted glass door to protect wine from UV rays
- Charcoal filter to help remove odours and protect wine
- Capacity: 154x75cl bottles (77 bottles in each refrigerated section)



E Series

Wall Site Combi Chiller/Freezer



E7 larp



E7 larp Side



E7 Isabel



E7 Isabel Side

At a Glance

Model	E7 larp	E7 Isabel
Dimensions (WxDxH) mm	1995×900×2035	2020×890×2040
Volume (L)	670 + 719	470 + 745
Power Supply (Amps)	20	13
Temperature Range	-18...-20°C/+2...+4°C	-18...-20°C/ 0...+2 °C
Cooling Type	Fan	Fan
Defrost Type	Automatic	Automatic
Lighting	Yes	Yes
Castors	Yes	Yes
Dual Temperature	Yes	Yes
Shelves	6	6

Features

Wall site combi freezer with glass hinged doors

- Self-closing heated doors
- 2 shelves per door section
- Adjustable shelves
- Reach-in freezer with glass sliding lids (larp model only)
- Top half glass door can be set to chiller or freezer
- Bottom wells can be set to chiller or freezer



H Series

White Storage Chiller and Freezer

At a Glance

Model	H1 Chiller	H2 Freezer	H1A Chiller
Dimensions (WxDxH) mm	545×570×845	500×545×840	550×580×850
Volume (L)	130	130	110*
Electrical Requirements (Watts)	250	250	250
Electrical Requirements (Running Amps)	1.04	1.04	1.04
Temperature Range	+2...+10°C	-18...-22°C	+2...+10°C/-18...-22°C*
Cooling Type	Static	Static	Static
Defrost Type	Off Cycle	Manual	Manual
Lighting	Yes	Yes	Yes
Castors	No	No	No
Dual Temperature	No	No	No
Shelves	3	3	2



Features

Energy efficient and static cooling storage chiller/freezer with hinged door and recessed door handle

H1 Chiller

- Salad crisper box
- 3 bottle / can balconies
- Glass or wired shelves

H2 Freezer

- 4 drawers
- Wired shelves

H1A Chiller

- Freezer compartment
- Glass shelves

*14L Freezer Compartment / 96L Fridge



H5

Static Storage Chiller and Freezer

At a Glance

Model	H5C Chiller	H5F Freezer
Dimensions (WxDxH) mm	545×590×1412	555×540×1435
Volume (L)	220	220
Electrical Requirements (Watts)	500	500
Electrical Requirements (Running Amps)	2.08	2.08
Temperature Range	+1...+10°C	-18...-22°C
Cooling Type	Static	Static
Defrost Type	Off Cycle	Manual
Lighting	Yes	Yes
Castors	No	No
Dual Temperature	No	No
Shelves	4	4
Drawer	1	1
Door Pockets	4	4

Features

Low height static storage chiller and freezer

- A-rated energy model
- Reversible door for added versatility



G5/600

Static Storage Chiller

At a Glance

Model	G5/600
Dimensions (WxDxH) mm	778x696x1895
Volume (L)	620
Electrical Requirements (Watts)	130
Electrical Requirements (Running Amps)	0.54
Temperature Range	0...+8°C
Cooling Type	Fan
Defrost Type	Off Cycle
Lighting	Yes
Castors	No
Dual Temperature	No
Shelves	3 + 1/2

Features

Robust static storage chiller

- A-rated energy model
- Reversible door for added versatility
- Adjustable shelves



G3

Solid Door Fridge/Freezer

At a Glance

Model	G3
Dimensions (WxDxH) mm	540x570x1720
Electrical Requirements (Watts)	750
Electrical Requirements (Running Amps)	3.13
Temperature Range	+1...+10°C / -18...-22°C
Cooling Type	Fan
Defrost Type	Automatic
Lighting	Yes
Castors	No
Dual Temperature	No
Fridge Shelves	3
Fridge Drawer	1
Fridge Door Pockets	3
Freezer Drawers	3

Features

Upright storage fridge/freezer with two solid hinged doors

- Frost free
- Reversible doors
- High temperature warning system
- Adjustable door storage
- Colour: white



GN1

Dual Temp Chiller/Freezer

At a Glance

Model	GN1
Dimensions (WxDxH) mm	730×810×2050
Volume (L)	580
Electrical Requirements (Watts)	645
Electrical Requirements (Running Amps)	2.69
Temperature Range	-18...+5°C
Cooling Type	Fan
Defrost Type	Automatic
Lighting	Yes
Castors	No
Dual Temperature	Yes
Shelves	4

Features

Stainless steel chiller/freezer

- Shelves on GN tracks
- GN tray compatible*



*Please see diagram for GN tray sizes on p. 85



GN2, GN3

Bench Chiller

At a Glance

Model	GN2	GN3
Dimensions (WxDxH) mm	1360×700×860	1778×700×860
Volume (L)	275	428
Electrical Requirements (Watts)	270	330
Electrical Requirements (Running Amps)	1.13	1.38
Temperature Range	-2...+8°C	-2...+8°C
Cooling Type	Fan	Fan
Defrost Type	Automatic	Automatic
Lighting	No	No
Castors	Yes	Yes
Dual Temperature	No	No
Shelves	1	1

Features

Stainless steel refrigerated storage bench chiller with working surface

- Automatic condensate evaporation
- Ventilated
- Stainless steel interior/exterior
- Interior rounded corner
- 1 shelf per door, GN tray compatible*



*Please see diagram for GN tray sizes on p. 85



Beer Dump

Sliding Top Bottle Cooler

At a Glance

Model	Beer Dump 1.1	Beer Dump 1.5
Dimensions (W×D×H) mm	1100×600×830	1410×600×820
Volume (L)	1400	1600
Electrical Requirements (Watts)	150	150
Electrical Requirements (Running Amps)	0.63	0.63
Temperature Range	0...+8°C	0...+8°C
Cooling Type	Static	Static
Defrost Type	Manual	Manual
Lighting	Yes	Yes
Castors	No	No
Dual Temperature	No	No



Features

Specialist refrigerated storage unit

- Sliding top for easy access
- High storage capacity



Blast Chiller/Freezer

Dual Temp Blast Storage Chiller/Freezer

At a Glance

Model	Blast
Dimensions (W×D×H) mm	810×820×1660
Electrical Requirements (Watts)	925
Electrical Requirements (Running Amps)	4.25
Volume (L)	204
Temperature Range	-18...-20°C / 0...+4°C
Cooling Type	Fan
Defrost Type	Automatic
Lighting	Yes
Castors	No
Dual Temperature	Yes

Features

Dual temperature blast and storage chiller/freezer with digital controller and adjustable feet

- Drip tray must be manually emptied or plumbed into permanent drain
- Digital controller and temperature display
- Temperature probe
- 4 pre-settable programs
- Internal rounded corners for easy cleaning
- Shelf racks removable for easy cleaning
- Simple access to fans for cleaning
- Accepts 1/1 Gastronorm pans (not supplied)*
- Chill capacity +70°C to +3°C 20 kg in 90 mins
- Freeze +70°C to -18°C 12kg in 240 mins
- Accepts up to 5 GN 1/1 size trays/pan in blast mode and up to 10 1/1 GN trays/pans as storage unit



*Please see diagram for GN tray sizes on p. 85



E1NL, E1.7NL, E2NL

High Vision Display Freezer

At a Glance

Model	E1NL	E1.7NL	E2NL
Dimensions (WxDxH) mm	1540×910×1000	1740×910×1000	2250×875×1015
Volume (L)	556	650	810
Electrical Requirements (Watts)	460	460	700
Electrical Requirements (Running Amps)	3	3	6
Temperature Range	-18...-23°C	-18...-23°C	-18...-23°C
Cooling Type	Static	Static	Static
Defrost Type	Manual	Manual	Manual
Lighting	Yes	Yes	Yes
Castors	Yes	Yes	Yes
Dual Temperature	No	No	No

Features

High vision wall site display freezer with hinged lid for back to back or side to side positioning

- Display grids available upon request
- Mains indicator light
- Defrost indicator light
- Temperature warning light
- Colour: grey or white
- E1NL can vary in colour and lid options



E1NS, E2NS

High Vision Display Freezer

At a Glance

Model	E1NS	E2NS
Dimensions (WxDxH) mm	1555×850×975	2250×850×1020
Volume (L)	556	810
Electrical Requirements (Watts)	460	460
Electrical Requirements (Running Amps)	3	3
Temperature Range	-18...-23°C	-18...-23°C
Cooling Type	Static	Static
Defrost Type	Manual	Manual
Lighting	Yes	Yes
Castors	Yes	Yes
Dual Temperature	No	No

Features

High vision wall site display freezer with sliding lids for back to back or side to side positioning

- Display grids available upon request
- Mains indicator light
- Defrost indicator light
- Temperature warning light
- Colour: grey or white
- E1NS can vary in colour and lid options



D1

Island Site Freezer

At a Glance

Model	D1
Dimensions (WxDxH) mm	1552x967x791
Volume (L)	595
Electrical Requirements (Watts)	180
Electrical Requirements (Running Amps)	1.12
Temperature Range	-25... -19°C
Cooling Type	Static
Defrost Type	Manual
Lighting	No
Castors	No
Dual Temperature	No

Features

High vision display freezer with sliding lids for back to back or side to side positioning

- Adjustable feet
- Temperature display
- Defrost drain
- Fan-assisted condenser
- Bumper bars

**D1C**

Sliding Glass Display Freezer

At a Glance

Model	D1C
Dimensions (WxDxH) mm	1473x760x865
Volume (L)	500
Electrical Requirements (Watts)	430
Electrical Requirements (Running Amps)	1.79
Temperature Range	-25...-19°C
Cooling Type	Static
Defrost Type	Manual
Lighting	Yes
Castors	Yes
Dual Temperature	No

Features

Sliding glass lid wall site display freezer on castors for easy movement

- Temperature read-out
- 5 baskets available upon request



D Series

Dual Temp Open Top Display Chiller/Freezer

At a Glance

Model	D3	D4
Dimensions (WxDxH) mm	1545×1005×1000	2040×1005×1000
Volume (L)	110	152
Electrical Requirements (Watts)	1000	1200
Electrical Requirements (Running Amps)	4.17	5.00
Display Area	1.12 m ²	1.55 m ²
Temperature Range	-20...+5°C	-20...+5°C
Cooling Type	Fan	Fan
Defrost Type	Automatic	Automatic
Lighting	Yes	Yes
Castors	Yes	Yes
Dual Temperature	Yes	Yes



Features

Island display freezer/chiller on castors for easy movement

- Temperature display
- Bumper bar
- Part glazed sides
- Night covers are available



E6A

Dual Temp Wall Site Display Freezer/Chiller

At a Glance

Model	E6A
Dimensions (WxDxH) mm	740×778×1120
Volume (L)	160
Electrical Requirements (Watts)	890
Electrical Requirements (Running Amps)	3.71
Temperature Range	-1...+5°C / -18...-20°C
Cooling Type	Fan
Defrost Type	Automatic
Lighting	Yes
Castors	Yes
Dual Temperature	Yes

Features

Italian wall site chiller/freezer promotional display case

- Glazed to three sides
- Colour: stone / grey
- Illuminated canopy for advertising



L1S

Dual Temp Bakery Display Counter

At a Glance

Model	L1S
Dimensions (WxDxH) mm	1340x720x1370
Volume (L)	550
Electrical Requirements (Watts)	870
Electrical Requirements (Running Amps)	3.63
Temperature Range	-18...+5°C
Cooling Type	Fan
Defrost Type	Automatic
Lighting	Yes
Castors	Yes
Dual Temperature	Yes
Shelves	2

Features

Italian double glazed curved glass bakery and patisserie display counter on castors for easy movement

- Anti-mist glass
- Rear sliding doors
- Stainless steel bottom display deck



L1F

Dual Temp Display Freezer/Chiller

At a Glance

Model	L1F
Dimensions (WxDxH) mm	1340x720x1370
Electrical Requirements (Watts)	2000
Electrical Requirements (Running Amps)	8.33
Temperature Range	-18...+5°C
Cooling Type	Fan
Defrost Type	Automatic
Lighting	Yes
Castors	Yes
Dual Temperature	Yes
Shelves	2

Features

Italian curved glass freezer display counter on castors for easy movement

- Double glazed curved front glass
- Stainless steel bottom display deck
- Glass shelves
- Temperature display
- Anti-mist glass
- Rear sliding doors
- Electronically controlled



K1**Dual Temp Display Freezer/Chiller****At a Glance**

Model	K1
Dimensions (WxDxH) mm	595×658×1805
Volume (L)	400
Electrical Requirements (Watts)	1057
Electrical Requirements (Running Amps)	4.40
Temperature Range	-18...+5°C
Cooling Type	Fan
Defrost Type	Manual
Lighting	Yes
Castors	Yes
Dual Temperature	Yes
Shelves	5

Features

Vertical showcase 4 sided display freezer/chiller

- Frost free
- Glazed all four sides
- Adjustable shelves
- Colour: stainless steel and silver aluminium finish

**K1R/K2R****Dual Temp Display Freezer/Chiller****At a Glance**

Model	K1R/K2R
Dimensions (WxDxH) mm	600×650×1800
Volume (L)	350
Electrical Requirements (Watts)	500
Electrical Requirements (Running Amps)	2.08
Temperature Range	-18...+5°C
Cooling Type	Fan
Defrost Type	Automatic
Lighting	Yes
Castors	Yes
Dual Temperature	Yes
Shelves	5

Features

4 sided display chiller/freezer

- Electronically controlled
- Temperature display
- Glazed all four sides
- Adjustable rotating glass shelves
- Colour: stainless steel and aluminium finish



K4

Dual Temp Hexagonal Display Chiller/Freezer

At a Glance

Model	K4
Dimensions (WxDxH) mm	915x855x1825
Volume (L)	600
Electrical Requirements (Watts)	1000
Electrical Requirements (Running Amps)	4.17
Temperature Range	-18...+5°C
Cooling Type	Fan
Defrost Type	Automatic
Lighting	Yes
Castors	Yes
Dual Temperature	Yes
Shelves	5

Features

Italian 6 sided chiller freezer with hinged door

- Temperature display
- Glazed all six sides
- Adjustable, removable and rotating glass shelves
- Rotation switch
- Colour: stainless steel and silver aluminium finish
- Shelf dimension: 560mm



G1

Glass Door Freezer

At a Glance

Model	G1
Dimensions (WxDxH) mm	595x640x1840
Volume (L)	300
Electrical Requirements (Watts)	570
Electrical Requirements (Running Amps)	3.9
Temperature Range	-18...-22°C
Cooling Type	Static
Defrost Type	Manual
Lighting	Yes
Castors	No
Dual Temperature	No
Shelves	6

Features

Upright single glass door display freezer with hinged door

- Anti-mist door
- Food safe plastic interior
- Fixed shelves
- Integrated grab handle



G1S

Dual Temp Glass Door Freezer/Chiller

At a Glance

Model	G1S
Dimensions (WxDxH) mm	670×760×1930
Volume (L)	400
Electrical Requirements (Watts)	500
Electrical Requirements (Running Amps)	2.08
Temperature Range	-25...+5°C
Cooling Type	Fan
Defrost Type	Automatic
Lighting	Yes
Castors	Yes
Dual Temperature	Yes
Shelves	5

Features

Upright single glass door freezer/chiller with hinged door and lockable castors for easy movement

- Long handle
- Adjustable shelves



G7, G7XXL

Dual Temp Double Glass Door Freezer/Chiller

At a Glance

Model	G7	G7XXL
Dimensions (WxDxH) mm	1320×760×1930	1320×890×1950
Volume (L)	1007	1270
Electrical Requirements (Watts)	1000	1400
Electrical Requirements (Running Amps)	4.17	5.83
Temperature Range	-25...+5°C	-25...+5°C
Cooling Type	Fan	Fan
Defrost Type	Automatic	Automatic
Lighting	Yes	Yes
Castors	Yes	Yes
Dual Temperature	Yes	Yes
Shelves	5	5

Features

Upright double glass door freezer/chiller with hinged door and lockable castors for easy movement

- Self-closing heated door
- Robust construction
- Food safe plastic interior



G8S

Dual Temp Triple Glass Door Freezer/Chiller

At a Glance

Model	G8S
Dimensions (W×D×H) mm	1970×760×1950
Volume (L)	1880
Electrical Requirements (Watts)	1500
Electrical Requirements (Running Amps)	6.52
Temperature Range	-25...+5°C
Cooling Type	Fan
Defrost Type	Automatic
Lighting	Yes
Castors	Yes
Dual Temperature	Yes
Shelves	5

Features

Upright triple glass door freezer/chiller with hinged doors and lockable castors for easy movement

- Electronic control
- Robust construction
- Food safe plastic interior

**E5**

Ice Cream Display Freezer

At a Glance

Model	E5
Dimensions (W×D×H) mm	1335×665×1170
Volume (L)	121
Electrical Requirements (Watts)	750
Electrical Requirements (Running Amps)	3.13
Temperature Range	-15...-20°C
Cooling Type	Static
Defrost Type	Electric
Lighting	Yes
Castors	No
Dual Temperature	No

Features

Ice cream display scoop freezer

- Display for 7 × 5 litre Napoli pans
- Digital temperature display
- Flat front glass



N2

Counter Top Display Freezer

At a Glance

Model	N2
Dimensions (WxDxH) mm	528x570x530
Volume (L)	60
Electrical Requirements (Watts)	500
Electrical Requirements (Running Amps)	2.08
Temperature Range	-18...-22°C
Cooling Type	Static
Defrost Type	Manual
Lighting	Yes
Castors	No
Dual Temperature	No
Shelves	2



Features

Counter top display freezer

- Adjustable shelves
- Double glazed door with heating to prevent misting



E Series

Wall Site Combi Freezer/Chiller



E7 larp



E7 larp Side



E7 Isabel



E7 Isabel Side

At a Glance

Model	E7 larp	E7 Isabel
Dimensions (WxDxH) mm	1995x900x2035	2020x890x2040
Volume (L)	670 + 719	470 + 745
Power Supply (Amps)	20	13
Temperature Range	-18...-20°C/+2...+4°C	-18...-20°C/ 0...+2 °C
Cooling Type	Fan	Fan
Defrost Type	Automatic	Automatic
Lighting	Yes	Yes
Castors	Yes	Yes
Dual Temperature	Yes	Yes
Shelves	6	6

Features

Wall site combi freezer with hinged glass doors

- Self-closing heated doors
- 2 shelves per door section
- Adjustable shelves
- Reach-in freezer with glass sliding lids (larp model only)
- Top half glass door can be set to chiller or freezer
- Bottom wells can be set to chiller or freezer



H Series

White Storage Chiller and Freezer

At a Glance

Model	H1 Chiller	H2 Freezer	H1A Chiller
Dimensions (WxDxH) mm	545×570×845	500×545×840	550×580×850
Volume (L)	130	130	110*
Electrical Requirements (Watts)	250	250	250
Electrical Requirements (Running Amps)	1.04	1.04	1.04
Temperature Range	+2...+10°C	-18...-22°C	+2...+10°C/-18...-22°C*
Cooling Type	Static	Static	Static
Defrost Type	Off Cycle	Manual	Manual
Lighting	Yes	Yes	Yes
Castors	No	No	No
Dual Temperature	No	No	No
Shelves	3	3	2



Features

Energy efficient and static cooling storage chiller/freezer with hinged door and recessed door handle

H1 Chiller

- Salad crisper box
- 3 bottle / can balconies
- Glass or wired shelves

H2 Freezer

- 4 drawers
- Wired shelves

H1A Chiller

- Freezer compartment
- Glass shelves

*14L Freezer Compartment / 96L Fridge



H5

Static Storage Chiller and Freezer

At a Glance

Model	H5F Freezer	H5C Chiller
Dimensions (WxDxH) mm	555×540×1435	545×590×1412
Volume (L)	220	220
Electrical Requirements (Watts)	500	500
Electrical Requirements (Running Amps)	2.08	2.08
Temperature Range	-18...-22°C	+1...+10°C
Cooling Type	Static	Static
Defrost Type	Manual	Off Cycle
Lighting	Yes	Yes
Castors	No	No
Dual Temperature	No	No
Shelves	4	4
Drawer	1	1
Door Pockets	4	4

Features

Low height static storage chiller and freezer

- A-rated energy model
- Reversible door for added versatility
- 1 drawer
- 4 door pockets



GN1

Dual Temp Freezer/Chiller

At a Glance

Model	GN1
Dimensions (WxDxH) mm	730x810x2050
Volume (L)	580
Electrical Requirements (Watts)	645
Electrical Requirements (Running Amps)	2.69
Temperature Range	-18...+5°C
Cooling Type	Fan
Defrost Type	Automatic
Lighting	Yes
Castors	No
Dual Temperature	Yes
Shelves	4

Features

Stainless steel freezer/chiller

- Shelves on GN tracks
- GN tray compatible*



*Please see diagram for GN tray sizes on p. 85



G2

Solid Door Storage Freezer

At a Glance

Model	G2
Dimensions (WxDxH) mm	777x695x1887
Volume (L)	580
Electrical Requirements (Watts)	750
Electrical Requirements (Running Amps)	3.13
Temperature Range	-18...-25°C
Cooling Type	Static
Defrost Type	Manual
Lighting	No
Castors	No
Dual Temperature	No
Shelves	6

Features

Upright storage freezer with hinged solid door

- Temperature display
- Self-closing door
- Food safe plastic interior
- Fixed shelves



G3**Solid Door Fridge/Freezer****At a Glance**

Model	G3
Dimensions (WxDxH) mm	540x570x1720
Electrical Requirements (Watts)	750
Electrical Requirements (Running Amps)	3.13
Temperature Range	-18...-22°C/+1...+10°C
Cooling Type	Fan
Defrost Type	Automatic
Lighting	Yes
Castors	No
Dual Temperature	No
Fridge Shelves	3
Fridge Drawer	1
Fridge Door Pockets	3
Freezer Drawers	3

Features

Upright storage fridge/ freezer with two solid hinged doors

- Frost free
- Reversible doors
- High temperature warning system
- Adjustable door storage
- Colour: white

**GN3DBF****Bench Freezer****At a Glance**

Model	GN3DBF
Dimensions (WxDxH) mm	1795x700x850
Volume (L)	416
Electrical Requirements (Watts)	570
Electrical Requirements (Running Amps)	3.9
Temperature Range	-18...-22°C
Cooling Type	Fan
Defrost Type	Automatic
Lighting	No
Castors	Yes
Dual Temperature	No

**Features**

Stainless steel refrigerated storage bench freezer with working surface

- Self closing doors
- Rounded interior corners
- Heavy duty full length door handle
- Stainless steel
- Adjustable and removable shelves
- 1 shelf per door, GN tray compatible*

*Please see diagram for GN tray sizes on p. 85



F Series

Chest Freezer

At a Glance

Model	F1	F2	F3
Dimensions (WxDxH) mm	625x585x890	1298x718x830	1555x720x840
Volume (L)	190	400	490
Electrical Requirements (Watts)	172	320	290
Electrical Requirements (Running Amps)	0.72	1.05	1.39
Temperature Range	-18...-25°C	-18...-25°C	-18...-25°C
Cooling Type	Static	Static	Static
Defrost Type	Manual	Manual	Manual
Lighting	No	No	No
Castors	No	No	No
Dual Temperature	No	No	No

Features

Hinged solid lid storage white chest freezer with temperature display

- Temperature warning light
- Built-in skin condenser
- Inner liner of hammered aluminium
- Quick freezing switch
- Steel sheet body
- Grab lid handle
- Quick freezing light



F1S

Chest Freezer

At a Glance

Model	F1S
Dimensions (WxDxH) mm	570x550x845
Volume (L)	103
Electrical Requirements (Watts)	172
Electrical Requirements (Running Amps)	0.72
Temperature Range	-18...-21°C
Cooling Type	Static
Defrost Type	Manual
Lighting	No
Castors	No
Dual Temperature	No

Features

Hinged lid chest freezer in white

- Indicator lights
- Counter balanced lid
- 1 wire freezer basket
- Adjustable feet



F1 SS

Chest Freezer

At a Glance

Model	F1 SS
Dimensions (WxDxH) mm	734x700x945
Volume (L)	189
Electrical Requirements (Watts)	150
Electrical Requirements (Running Amps)	0.68
Temperature Range	-24...-14°C
Cooling Type	Static
Defrost Type	Manual
Lighting	No
Castors	Yes
Dual Temperature	No
Baskets	1

Features

Hinged solid lid chest freezer in white on strong castors for easy movement

- Stainless steel lid
- Handle with lock
- Thermometer
- Powder coated white inner liner
- Defrost water drain



F2 SS

Chest Freezer

At a Glance

Model	F2 SS
Dimensions (WxDxH) mm	1284x700x945
Volume (L)	385
Electrical Requirements (Watts)	230
Electrical Requirements (Running Amps)	1.05
Temperature Range	-24...-14°C
Cooling Type	Static
Defrost Type	Manual
Lighting	No
Castors	Yes
Dual Temperature	No
Baskets	2

Features

Hinged solid lid chest freezer in white on strong castors for easy movement

- Stainless steel lid
- Handle with lock
- Thermometer
- Powder coated white inner liner
- Defrost water drain



F3 SS

Chest Freezer

At a Glance

Model	F3 SS
Dimensions (WxDxH) mm	1504x700x945
Volume (L)	463
Electrical Requirements (Watts)	230
Electrical Requirements (Running Amps)	1.05
Temperature Range	-24...-14°C
Cooling Type	Static
Defrost Type	Manual
Lighting	No
Castors	Yes
Dual Temperature	No
Baskets	2

Features

Hinged solid lid chest freezer in white on strong castors for easy movement

- Stainless steel lid
- Handle with lock
- Thermometer
- Powder coated white inner liner
- Defrost water drain



Blast Freezer/Chiller

Dual Temp Blast Storage Freezer/Chiller

At a Glance

Model	Blast
Dimensions (WxDxH) mm	810x820x1660
Electrical Requirements (Watts)	925
Electrical Requirements (Running Amps)	4.25
Volume (L)	204
Temperature Range	-18...-20°C / 0...+4°C
Cooling Type	Fan
Defrost Type	Automatic
Lighting	Yes
Castors	No
Dual Temperature	Yes

Features

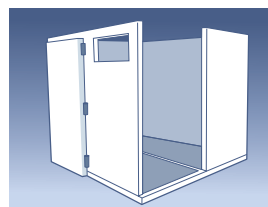
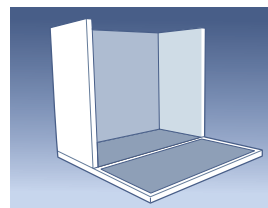
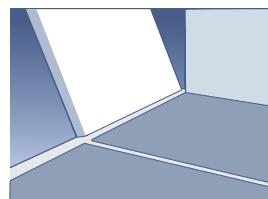
Dual temperature blast and storage chiller/freezer with digital controller and adjustable feet

- Drip tray must be manually emptied or plumbed into permanent drain
- Digital controller and temperature display
- Temperature probe
- 4 pre-settable programs
- Internal rounded corners for easy cleaning
- Shelf racks removable for easy cleaning
- Simple access to fans for cleaning
- Accepts 1/1 Gastronorm pans (not supplied)*
- Chill capacity +70°C to +3°C 20 kg in 90 mins
- Freeze +70°C to -18°C 12kg in 240 mins
- Accepts up to 5 GN 1/1 size trays/pan in blast mode and up to 10 1/1 GN trays/pans as storage unit



*Please see diagram for GN tray sizes on p. 85

Modular Walk-in Cold Rooms



Modular walk-in cold rooms provide the perfect refrigerated storage solution even in the most challenging environments. Lowe's extensive logistical program ensures successful delivery and installation, each and every time.

Benefits

- ✓ Suitable for indoor and outdoor use.
- ✓ Modular system comes in variable sizes.
- ✓ Full technical backup is provided with each rental.
- ✓ Built on the ground, a modular solution does not require a base or stairs.
- ✓ Increased site accessibility due to easily transportable panels which overcome traditional delivery barriers presented by confined spaces or difficult delivery routes.
- ✓ Dual temperature functionality allows a modular cold room to be easily converted from chiller to freezer storage as required.
- ✓ Flexible, interlocking panels allow a modular cold room to be extended for additional storage by simply adding further panels and additional motors as required.
- ✓ Risk of equipment downtime as a result of breakdown is reduced. Spare motors can be provided to plug in while repair takes place or until a service engineer arrives, providing continual running assurance.

Dimensions, Functions and Optional Extras

Cold Room Dimensions	Chiller	Freezer	Max Pallets*	No. sockets required**	No. of Monoblock motors***	Optional Extras (additional cost)					
						Racking	Ramps	Pallet Door	Double Barn Doors	Additional Motors	Extension Leads
2.4m×2.4m (8ft×8ft)	✓	✓	4	1	1 - chiller and freezer	✓	✓	✓	✓	✓	✓
2.4m×3.6m (8ft×12ft)	✓	✓	6	2	1 - chiller and freezer	✓	✓	✓	✓	✓	✓
2.4m×4.8m (8ft×16ft)	✓	✓	8	2	2 - chiller and freezer	✓	✓	✓	✓	✓	✓
2.4m×6.0m (8ft×20ft)	✓	✓	10	2 for chill or 3 for freeze	2 - chiller / 3 - freezer	✓	✓	✓	✓	✓	✓
2.4m×7.2m (8ft×24ft)	✓	✓	12	3	2 - chiller / 3 - freezer	✓	✓	✓	✓	✓	✓
2.4m×8.4m (8ft×28ft)	✓	✓	14	3 for chill or 4 for freeze	3 - chiller and freezer	✓	✓	✓	✓	✓	✓
2.4m×9.6m (8ft×32ft)	✓	✓	16	4	3 - chiller and freezer	✓	✓	✓	✓	✓	✓
2.4m×10.8m (8ft×36ft)	✓	✓	18	4	3 - chiller / 4 - freezer	✓	✓	✓	✓	✓	✓
2.4m×12m (8ft×40ft)	✓	✓	20	4	4 - chiller and freezer	✓	✓	✓	✓	✓	✓

*This is the maximum number of pallets and should be used as guidance only. Please ensure that space is free to walk into the room and/or get the pallet truck in if required.

16 amp sockets; *Per Cold Room

Features at a Glance

- Running temperature: -25... +2 °C
- Dual temperature setting (chiller or freezer)
- Modular system available in variable sizes
- Digital temperature panel
- Emergency door release
- Self-extinguishing panels in the event of fire

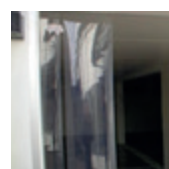
Notes:

The number of monoblock units per room are based on a low/medium usage with a maximum ambient of 30 °C.

If the cold room is to be used constantly and the door to be left open for long periods or used in ambients above 30 °C, additional monoblock units should be fitted to the cold room.

Cold rooms should be installed on a flat level base.

Accessories



Chill Strips



Additional Motors



Ramps



Pallet Doors



Python Holes



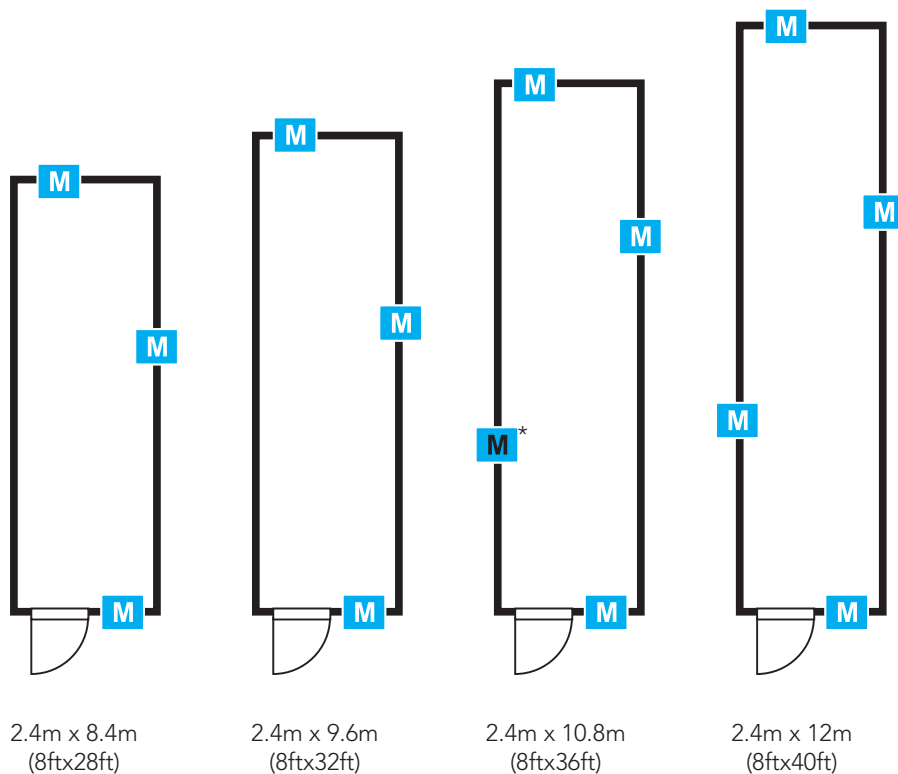
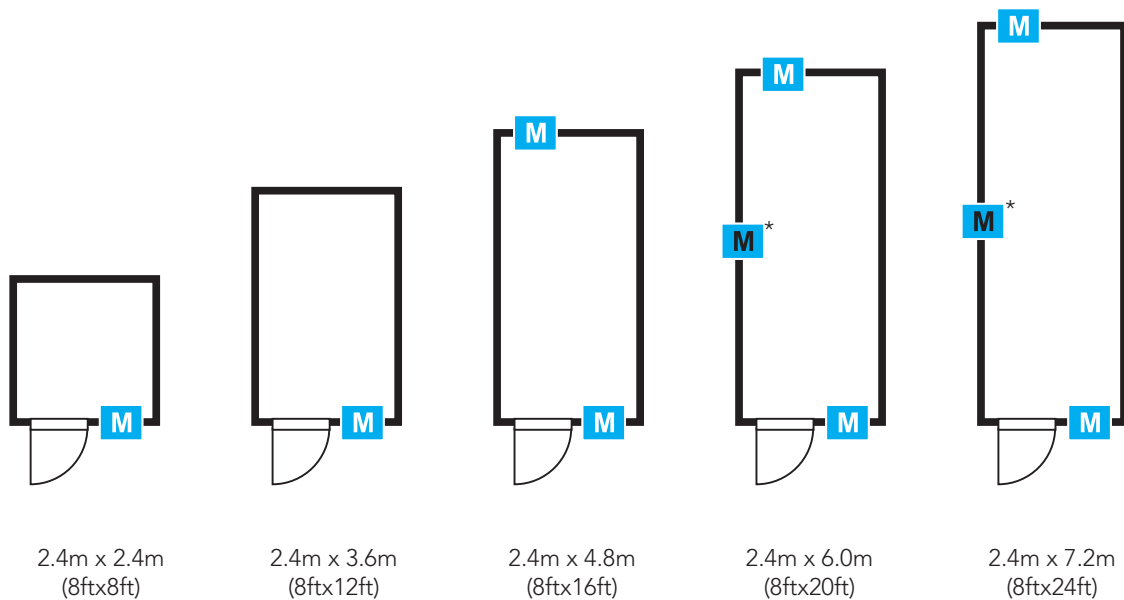
Racking



Extension Leads

Modular Cold Rooms

A flexible, easy installation cold storage solution



Doors can also be added on the long side. *Additional monoblock units for freezer

Temporary Kitchens

Containerized kitchens of various sizes and configurations provided by PKL Group, a division of Lowe Rental.

Temporary Food Cube

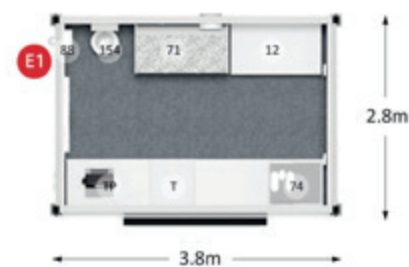
The Hire Food Cube can be used to provide a range of hot and cold drinks and grab and go lunches. Although a temporary facility, the Hire Food Cube can be supplied with a vinyl wrap to enable you to customize the unit with your own branding.

Services Key

- E1 63amp Single Phase

Equipment Key

- 12 Hot Cupboard 1200mm
- 71 Money Maker Servery
- 154 Stand-Alone Handwash Station
- 74 Coffee Machine
- 88 Insect-O-Cutor
- T Bespoke Table
- TP Till Point



*Please note that kitchen units may be supplied with or without hatches, please state whether this is a requirement for your project on enquiry.

Dry Store Units

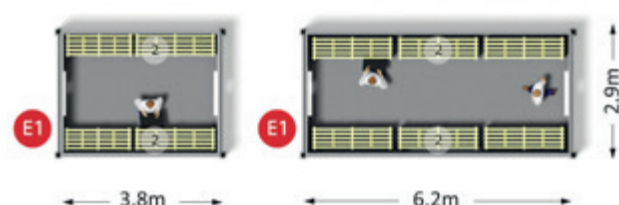
The Dry Store Unit is available in two sizes and can be linked to a temporary kitchen unit or to a permanent building with ease. Supplied with four tier food safe racking.

Services Key

- E1 63amp Single Phase

Equipment Key

- 2 Racking



Field Kitchens

The Field Kitchen is traditionally used for smaller or more specific catering requirements. Suitable for two chefs to work comfortably and capable of supplying 250 meals per day, a field kitchen can be operational within minutes of arrival on site.

Services Key

- E1** 63amp Single Phase
- W1** 15mm Water Inlet
- F1** 40mm Waste Outlet
- G1** Gas Inlet

Equipment Key

- 1** Preparation Tables
- 3** Water Heater 70lt
- 124** Single Bowl Sink and Hand Wash Station 2400mm
- 6** Six Burner Oven Range
- 7** Salamander Grill
- 8** Double Basket Fryer
- 9** Upright Fridge 610lt
- 12** Hot Cupboard 1200mm



*Please note that kitchen units may be supplied with or without hatches, please state whether this is a requirement for your project on enquiry.

Mini Kitchens

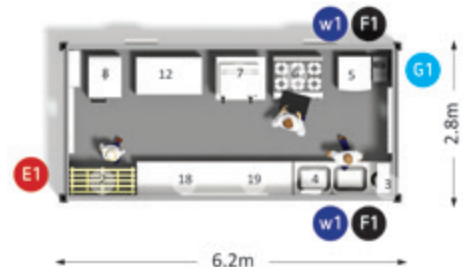
The Mini Kitchen is a compact kitchen designed for sites where space may be at a premium. Suitable for three chefs to work comfortably and capable of supplying up to 500 meals per day, a mini kitchen is ideal for smaller catering operations.

Services Key

- E1** 63amp Single Phase
- W1** 15mm Water Inlet
- F1** 40mm Waste Outlet
- G1** Gas Inlet

Equipment Key

- 2** Racking
- 3** Water Heater 70lt
- 4** Double Bowl Sink and HandWash Station 1800mm
- 5** Undercounter Dishwasher
- 6** Six Burner Oven Range
- 7** Salamander Grill
- 8** Double Basket Fryer
- 12** Hot Cupboard 1200mm
- 18** Undercounter Fridge 354lt
- 19** Undercounter Freezer 354lt



Magnum Kitchens

The Magnum Kitchen is designed for use by all large scale catering operations. Suitable for up to five chefs to work comfortably and capable of supplying 1,000 meals per day depending on the equipment selection.

Services Key

- E1** 63amp Single Phase
- W1** 15mm Water Inlet
- W2** 22mm Water Inlet
- F1** 40mm Waste Outlet
- G1** Gas Inlet

Equipment Key

- | | |
|--|-----------------------------|
| 1 Preparation Tables | 7 Salamander Grill |
| 2 Racking | 8 Double Basket Fryer |
| 3 Water Heater 70lt | 9 Upright Fridge 610lt |
| 33 Double Bowl Sink and Hand Wash Station 2400mm | 10 Upright Freezer 610lt |
| 6 Six Burner Oven Range | 11 Hot Cupboard 1900mm |
| | 13 Combination Oven 10 Rack |



*Please note that kitchen units may be supplied with or without hatches, please state whether this is a requirement for your project on enquiry.

Mixed Double Kitchens

The Mixed Double Kitchen is the same size as the Magnum Kitchen but provides a sperate cold or dry storage room inside the unit. Suitable for up to five chefs to work comfortably and capable of supplying 1,000 meals per day depending on the equipment selection.

Services Key

- E1** 63amp Single Phase
- W1** 15mm Water Inlet
- W2** 22mm Water Inlet
- F1** 40mm Waste Outlet
- G1** Gas Inlet

Equipment Key

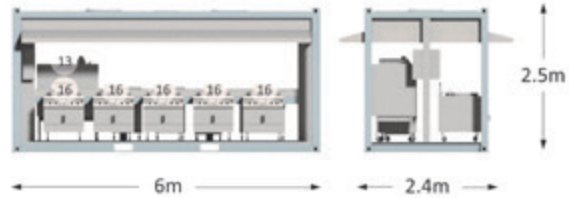
- | | |
|--|-------------------------------|
| 1 Preparation Tables | 8 Double Basket Fryer |
| 2 Racking | 9 Upright Fridge 610lt |
| 3 Water Heater 70lt | 10 Upright Freezer 610lt |
| 33 Double Bowl Sink and Hand Wash Station 2400mm | 12 Hot Cupboard 1200mm |
| 6 Six Burner Oven Range | 14 Combination Oven 24 Rack |
| 7 Salamander Grill | 18 Undercounter Fridge 354lt |
| | 19 Undercounter Freezer 354lt |



Central Island Canopies

Central Island Canopies have been developed to provide temporary production kitchens for larger events or mass public gatherings.

Catering equipment is installed along the centre of the canopy providing 12 metres of cooking space. Each canopy can hold up to eight 24 rack combination ovens, eight 250 litre boiling pans or twelve six burner ovens. Integrates fire suppression systems, auto gas shut off and gas detection devices.



Services Key

- E1 63amp Single Phase
- W1 22mm Water Inlet
- F1 40mm Waste Outlet
- G1 Gas Inlet

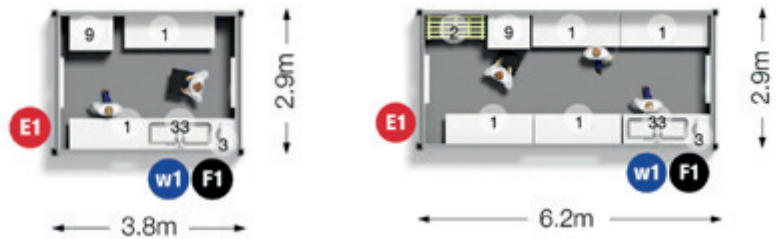
Equipment Key

- 16 Boiling Pans
- 13 Combi Oven

*Please note that kitchen units may be supplied with or without hatches, please state whether this is a requirement for your project on enquiry.

Preparation Kitchens

Available in two sizes, Preparation Kitchens are capable of standing alone or linking to other temporary kitchen units for even greater production capacity.



Services Key

- E1 63amp Single Phase
- W1 16mm Water Inlet
- F1 40mm Waste Outlet

Equipment Key

- 1 Preparation Tables
- 2 Racking
- 3 Water Heater 70lt
- 33 Double Bowl Sink and Hand Wash Station 1800mm
- 9 Upright Fridge 610lt



Pot Wash Units

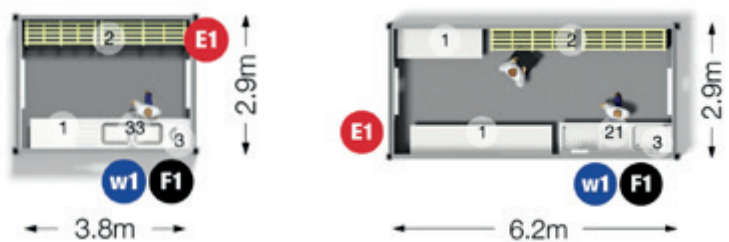
When temporary dishwashing facilities are required, portable Warewashing Units provide the ideal solution.

Services Key

- E1** 63amp Single Phase
- W1** 15mm Water Inlet
- F1** 40mm Waste Outlet

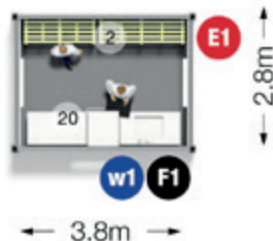
Equipment Key

- 1** Preparation Tables
- 2** Racking
- 3** Water Heater 70lt
- 33** Double Bowl Sink and Hand Wash Station 2400mm
- 21** Sterilising Sink 2700mm



*Please note that kitchen units may be supplied with or without hatches, please state whether this is a requirement for your project on enquiry.

Tom Thumb



Services Key

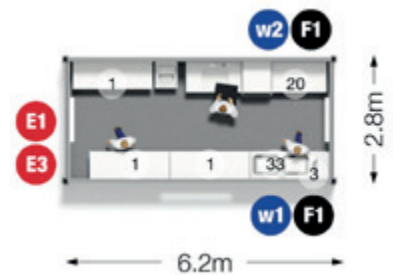
- E1** 63amp Single Phase
- W1** 15mm Water Inlet
- F1** 40mm Waste Outlet

Equipment Key

- 2** Racking
- 20** Hood Dishwasher



Aquarius



Services Key

- E1** 63amp Single Phase
- E3** 63amp Three Phase
- W1** 15mm Water Inlet
- W2** 22mm Water Inlet
- F1** 40mm Waste Outlet

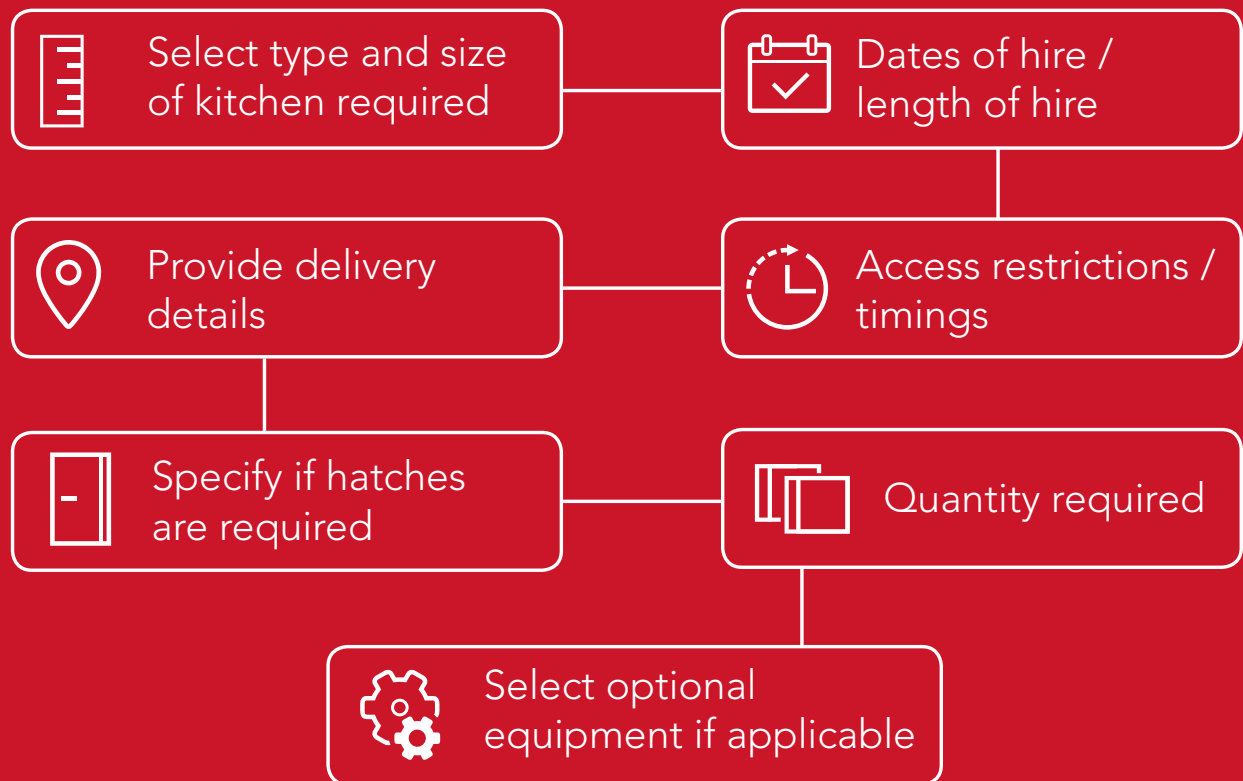
Equipment Key

- 1** Preparation Tables
- 3** Water Heater 70lt
- 20** Hood Dishwasher
- 33** Double Bowl Sink and Hand Wash Station 1800mm



How to Order

Please provide the team with the following information to order a kitchen:



Solid Top Cooker Range and Oven

At a Glance

Model	H40A
Dimensions (WxDxH) mm	900x845x890
Voltage	400V/Three Phase/Neutral
El. Plug (Amps)	32
El. Consumption (kW)	14.7
Oven Temperature	100 - 250°C
Extra Details	Compatibility GN2/1*

Features

- Full depth heavy cast iron hotplates
- Full width removable drip tray



*Please see diagram for GN tray sizes on p. 85

6 Hot Plate Cooker and Oven

At a Glance

Model	H41A
Dimensions (WxDxH) mm	900x845x890
Voltage	400V/Three Phase/Neutral
El. Plug (Amps)	32
El. Consumption (kW)	18.9
Oven Temperature	100 - 250°C
Extra Details	Compatibility GN2/1*

Features

- 6 fast-acting circular hotplates
- Static oven
- Full width removable drip tray



*Please see diagram for GN tray sizes on p. 85

Full Height Fryer

At a Glance

Model	H15D
Dimensions (WxDxH) mm	400x770x890
Voltage	400V/Three Phase/Neutral
El. Plug (Amps)	32
El. Consumption (kW)	20
Temperature	130 - 190°C
Extra Details	20 ltr. oil capacity

Features

- Fast-acting safety thermostat
- Resting position for elements
- Single tank
- 2 baskets



Flat Griddle

At a Glance

Model	H91A
Dimensions (WxDxH) mm	800x770x890
Cooking Area (WxD) mm	780x490
Voltage	400V/Three Phase/Neutral
El. Plug (Amps)	16
El. Consumption (kW)	6.9
Temperature	80 - 290°C

Features

- Polished steel plate provides even heat distribution
- Comes with a stainless steel stand for waist-height convenience



Half Ribbed Griddle

At a Glance

Model	H91C
Dimensions (WxDxH) mm	800x770x890
Cooking Area (WxD) mm	780x490
Voltage	400V/Three Phase/Neutral
El. Plug (Amps)	16
El. Consumption (kW)	6.9
Temperature	80 - 290°C

Features

- Half-ribbed, half-polished steel plate provides even heat distribution
- Comes with a stainless steel stand for waist-height convenience



Chargrill

At a Glance

Model	H49C
Dimensions (WxDxH) mm	800x700x850
Cooking Area (WxD) mm	631x478
Voltage	400V/Three Phase/Neutral
El. Plug (Amps)	16
El. Consumption (kW)	8

Features

- High performance cast iron burners and radiants
- Variable burner control with turndown position
- Heavy duty, double-sided cast iron brander bars



Pasta Cooker

At a Glance

Model	H29B
Dimensions (WxDxH) mm	400x730x850
Voltage	400V/Three Phase/Neutral
El. Plug (Amps)	16
El. Consumption (kW)	5.5
Water Inlet/Drain	In ½" BSP - Out 1" BSP
Temperature	70 - 100°C
Extra details	26 ltr. water capacity

Features

- 3x1/3 baskets
- Single tank



Bratt Pan

At a Glance

Model	H48C
Dimensions (WxDxH) mm	1000x920x850
Voltage	400V/Three Phase/Neutral
El. Plug (Amps)	32
El. Consumption (kW)	17
Water Inlet/Drain	In ¾" BSP
Temperature	120 - 300°C
Extra Details	100 ltr. water capacity

Features

- Manual tilt via front located handle
- Automatic power cut-off when pan tilts
- Integrated water faucet
- Duomat bottom



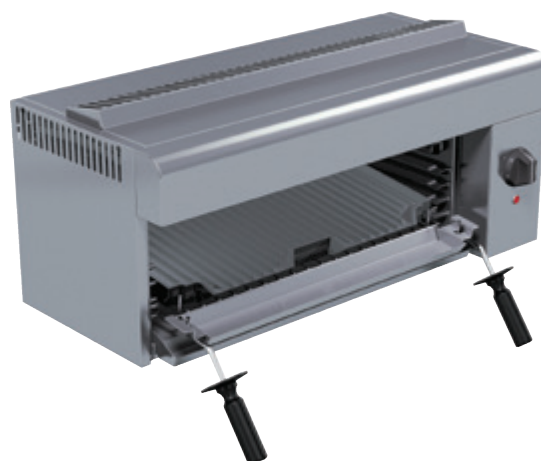
Salamander Grill

At a Glance

Model	H18A
Dimensions (WxDxH) mm	785x360x325
Voltage	240V/Single Phase/Neutral
El. Plug (Amps)	16
El. Consumption (kW)	3.9

Features

- Stainless steel exterior with cast iron linings
- Double-cased with internal insulation
- Five position shelf runners
- Oil collection tray mounted on grid shelf



Stockpot Stove

At a Glance

Model	H72A
Dimensions (WxDxH) mm	570x590x515
Voltage	400V/Three Phase/Neutral
El. Plug (Amps)	16
El. Consumption (kW)	5
Extra details	400mm ring diameter

Features

- Stainless steel



10 Grid Combination Oven

At a Glance

Model	GN COMBI 10E
Dimensions (WxDxH) mm	920x910x1730
Voltage	400V/Three Phase/Neutral
El. Plug (Amps)	32
Consumption (kW)	17.3
Water Inlet/Drain	In 2 x 3/4" BSP - Out 40mm diam.
Extra Details	10 x GN1/1 tray capacity*

Features

- Digital display
- Mixed oven: combi or steam
- Can work without water connection in convection mode only
- Comes with stand



*Please see diagram for GN tray sizes on p. 85

24 Grid Combination Oven

At a Glance

Model	GN COMBI 24E
Dimensions (WxDxH) mm	1210x1100x1800
Voltage	400V/Three Phase/Neutral
El. Plug (Amps)	63
El. Consumption (kW)	27.5
Water inlet / drain	In 2 x 3/4" BSP - Out 40mm diam.
Extra Details	24 x GN1/1 tray or 12 x GN2/1 tray capacity*

Features

- Digital display
- Mixed oven: combi or steam
- Can work without water connection in convection mode only
- Comes with stand



*Please see diagram for GN tray sizes on p. 85

Double Deck Pizza Oven

At a Glance

Model	H28B
Dimensions (WxDxH) mm	850x1250x1760
Voltage	400V/Three Phase/Neutral
El. Plug (Amps)	32
El. Consumption (kW)	12

Features

- Comes with stand (stand dimensions included in overall dimensions)
- Refractory ceramic bottom
- Cooking chamber in aluminium-coated steel plate
- Polished stainless steel



Gas Range

Solid Top Cooker Range and Oven

At a Glance

Model	H40B
Dimensions (WxDxH) mm	900x770x890
Gas Connection	¾" BSP
Gas Consumption (kW)	17.3
Oven Temperature	120 - 270°C
Burner Temperature	Up to 400°C
Extra Details	Compatibility GN2/1*

Features

- Chef's solid top has removable bullseye



*Please see diagram for GN tray sizes on p. 85

6 Hot Plate Cooker and Oven

At a Glance

Model	H41B
Dimensions (WxDxH) mm	900x770x890
Gas Connection	¾" BSP
Gas Consumption (kW)	38.9
Oven Temperature Range	120 - 270°C
Extra Details	Compatibility GN2/1*

Features

- Energy efficient, high performance 5.3kW (nett) burners
- Fast heat up means reduced waiting times



*Please see diagram for GN tray sizes on p. 85

Double Basket Fryer

At a Glance

Model	H15C
Dimensions (W×D×H) mm	400×760×890
Gas Connection	½" BSP
Gas Consumption (kW)	35.1
Temperature	60 - 200°C
Extra Details	25 ltr. oil capacity

Features

- Variable, precise control
- Sediment collection zone
- Single tank
- 2 baskets



Flat Griddle

At a Glance

Model	H91B
Dimensions (W×D×H) mm	700×730×850
Cooking Area (W×D) mm	650×570
Gas Connection	½" BSP
Gas Consumption (kW)	11

Features

- Polished steel plate provides even heat distribution
- Comes with a stainless steel stand for waist-height convenience



Half Ribbed Griddle

At a Glance

Model	H91D
Dimensions (W×D×H) mm	700×730×850
Cooking Area (W×D) mm	650×570
Gas Connection	½" BSP
Gas Consumption (kW)	11

Features

- Half-ribbed, half-polished steel plate provides even heat distribution
- Comes with a stainless steel stand for waist-height convenience



Chargrill

At a Glance

Model	H49B
Dimensions (W×D×H) mm	900×770×890
Cooking Area (W×D) mm	860×630
Gas Connection	½" BSP
Gas Consumption (kW)	26.3

Features

- High performance cast iron burners and radiants
- Variable burner control with turndown position
- Heavy duty, double-sided cast iron brander bars



Chargrill

At a Glance

Model	H49D
Dimensions external (W×D×H) mm	800×900×850
Cooking Area (W×D) mm	631×640
Gas Connection	¾" BSP
Gas Consumption (kW)	20

Features

- Double-sided cooking surface, 1 side for meat and 1 side for fish and vegetables
- Drawer can be filled with water to obtain vapor for cooking
- Highly resistant enameled cast iron for easy cleaning



Pasta Cooker

At a Glance

Model	H29C
Dimensions (W×D×H) mm	400×730×850
Gas Connection	½" BSP
Gas Consumption (kW)	8.5
Temperature	70 - 100°C
Water Inlet/Drain	In ½" BSP - Out 1" BSP
Extra Details	26 ltr. water capacity

Features

- Ideal for bulk preparation and individual portions
- In-built water faucet
- Single tank
- 3 × 1/3 baskets



Bratt Pan

At a Glance

Model	H48D
Dimensions (WxDxH) mm	1000×920×890
Voltage	240V/Single Phase/Neutral
El. Plug (Amps)	13A
El. Consumption (kW)	0.1
Gas Connection	½" BSP
Gas Consumption (kW)	27
Water Inlet/Drain	In ¾" BSP
Temperature	120 - 300°C
Extra Details	100 ltr. water capacity

Features

- Manual tilt via front located handle
- Integrated water faucet
- Automatic power cut-off when pan tilts
- Duomat bottom



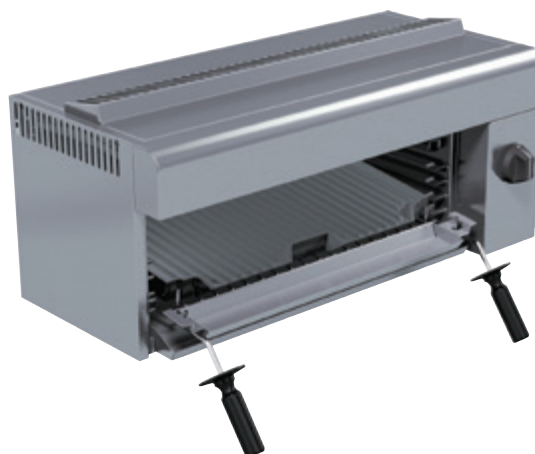
Salamander Grill

At a Glance

Model	H18B
Dimensions (WxDxH) mm	785×355×350
Gas Connection	½" BSP
Gas Consumption (kW)	6.6

Features

- Stainless steel exterior with cast iron linings
- Double-cased with internal insulation
- Five position shelf runners
- Oil collection tray mounted on grid shelf



Stockpot Stove

At a Glance

Model	H72B
Dimensions (WxDxH) mm	610×610×480
Gas Connection	½" BSP
Gas Consumption (kW)	14.6
Extra Details	Supports up to 40kg weight

Features

- Heat resistant handles
- Vitreous enamelled cast iron hob
- Pilot light



10 Grid Combination Oven

At a Glance

Model	GN COMBI 10G
Dimensions (WxDxH) mm	920x910x1730
Voltage	240V/Single Phase/Neutral
El. Plug (Amps)	13
El. Consumption (kW)	0.8
Gas Connection	¾" BSP
Gas Consumption (kW)	19.5
Water Inlet/Drain	In 2 x ¾" BSP - Out 40mm diam.
Extra Details	10 x GN1/1 tray capacity*

Features

- Digital display
- Humidity control
- Mixed oven: combi or steam
- Fan with automatic rotation reverse
- Comes with stand



*Please see diagram for GN tray sizes on p. 85

24 Grid Combination Oven

At a Glance

Model	GN COMBI 24G
Dimensions (WxDxH) mm	1210x1100x1800
Voltage	240V/Single Phase/Neutral
El. Plug (Amps)	13
El. Consumption (kW)	0.95
Gas Connection	¾" BSP
Gas Consumption (kW)	32
Water Inlet/Drain	In 2x¾" BSP - Out 40mm diam.
Extra Details	24 x GN1/1 or 12 x GN2/1 tray capacity*

Features

- Digital display
- Humidity control
- Mixed oven: combi or steam
- Fan with automatic rotation reverse
- Comes with stand



*Please see diagram for GN tray sizes on p. 85

Extractors

Flat Cooker Hood

At a Glance

Model	EH21B
Dimensions (WxDxH) mm	600x485x150
Voltage	240V/Single Phase/Neutral
El. Plug (Amps)	13
El. Consumption (kW)	0.1

Features

- Maximum extraction rate 170m³/hr for maximum power
- Glass visor to direct air flow
- Noise level 59dBA to keep background noise level to a minimum
- 3 speed fan with slider controls for flexibility and control



Chimney Cooker Hood

At a Glance

Model	EH21C
Dimensions (W×D×H) mm	600×450×740
Voltage	240V/Single Phase/Neutral
El. Plug (Amps)	13
El. Consumption (kW)	0.15

Features

- 3 speed extractor fan
- Maximum extraction rate 375m³/h
- Dishwasher safe aluminium filter



1.2m Self-Standing Extractor Hood

At a Glance

Model	EH21A
Dimensions (W×D×H) mm	1260×1040×2150
Voltage	240V/Single Phase/Neutral
El. Plug (Amps)	13
El. Consumption (kW)	1.5

Features

- Self-supporting extractor hood for light or medium duty use



2.1m Self-Standing Extractor Hood

At a Glance

Model	EH21D
Dimensions (W×D×H) mm	2100×1000×2500
Voltage	240V/Single Phase/Neutral
El. Plug (Amps)	16
El. Consumption (kW)	1

Features

- Detachable legs
- Requires ducting
- Large self-supporting extractor hood for heavy duty use
- For electric equipment use only



Turbofan 4 Tray Convection Oven

At a Glance

Model	H17C
Dimensions (W×D×H) mm	810×660×1510
Voltage	240V/Single Phase/Neutral
El. Plug (Amps)	13
El. Consumption (kW)	3.1
Temperature	50 - 260°C
Extra Details	Compatibility GN1/1*

Features

- Electronic thermostat
- Grill element
- 4 wire oven racks
- Stainless steel



*Please see diagram for GN tray sizes on p. 85

Burco 4 Tray Convection Oven

At a Glance

Model	H17D
Dimensions (W×D×H) mm	670×670×1620
Voltage	240V/Single Phase/Neutral
El. Plug (Amps)	13
El. Consumption (kW)	3
Temperature	60 - 260°C
Extra Details	Compatibility GN1/1*

Features

- Manual thermostat
- 4 wire oven racks
- Stainless steel



*Please see diagram for GN tray sizes on p. 85

Table Top Appliances

Single Raised Hotplate

At a Glance

Model	H14A
Dimensions (W×D×H) mm	370×260×205
Voltage	240V/Single Phase/Neutral
El. Plug (Amps)	13
El. Consumption (kW)	1.5

Features

- 3 boiling and 3 simmering positions
- Thermostat controlled



Double Raised Hotplate

At a Glance

Model	H14B
Dimensions (W×D×H) mm	565×400×120
Voltage	240V/Single Phase/Neutral
El. Plug (Amps)	13
El. Consumption (kW)	3
Extra Details	180mm sealed hotplates

Features

- Variable heat control
- Automatic power reduction
- 180 mm / 7" sealed hotplates for easy cleaning



Single Induction Hotplate

At a Glance

Model	H10A
Dimensions (W×D×H) mm	330×430×100
Voltage	240V/Single Phase/Neutral
El. Plug (Amps)	13
El. Consumption (kW)	3
Extra Details	260mm ring diameter

Features

- Durable stainless steel body
- Simple rotary control feature



Double Induction Hotplate

At a Glance

Model	H10B
Dimensions (W×D×H) mm	650×370×70
Voltage	240V/Single Phase/Neutral
El. Plug (Amps)	13
El. Consumption (kW)	3

Features

- Black ceramic glass
- Instant heat
- Over-heat protection
- LED display



Induction Wok

At a Glance

Model	H10D
Dimensions (WxDxH) mm	450×600×265
Voltage	240V/Single Phase/Neutral
El. Plug (Amps)	13
El. Consumption (kW)	2.9

Features

- Pan detection function cuts power when no pan is present
- Easy to use
- Boost function delivers power when it's most needed
- Pan included



Table Top Fryer

At a Glance

Model	H15A
Dimensions (WxDxH) mm	270×400×300
Voltage	240V/Single Phase/Neutral
El. Plug (Amps)	13
El. Consumption (kW)	2.8
Extra Details	5 ltr. oil capacity

Features

- Adjustable thermostatic control
- 1 basket
- Single tank



Table Top Fryer

At a Glance

Model	H15B
Dimensions (WxDxH) mm	540×400×300
Voltage	240V/Single Phase/Neutral
El. Plug (Amps)	2 × 13
El. Consumption (kW)	5.6
Extra Details	2 x 5 ltr. capacity

Features

- Adjustable thermostatic control
- 2 baskets
- Double tank



Table Top Flat Griddle

At a Glance

Model	H9A
Dimensions (W×D×H) mm	750×465×240
Voltage	240V/Single Phase/Neutral
El. Plug (Amps)	13
El. Consumption (kW)	2.9
Temperature	60 - 300°C

Features

- Large cooking area giving high output
- 2 independently controlled cooking areas



Small Table Top Flat Griddle

At a Glance

Model	H9E
Dimensions (W×D×H) mm	550×465×240
Voltage	240V/Single Phase/Neutral
El. Plug (Amps)	13
El. Consumption (kW)	2.9
Temperature	50 - 240°C

Features

- Adjustable thermostatic control
- Durable stainless steel body
- Single cooking area



Table Top Pasta Cooker

At a Glance

Model	H29A
Dimensions (W×D×H) mm	285×520×435
Voltage	240V/Single Phase/Neutral
El. Plug (Amps)	13
El. Consumption (kW)	2.9
Temperature	25 - 100°C
Extra Details	8 ltr. water capacity

Features

- Stainless steel
- Thermal safety cut out



Sous Vide

At a Glance

Model	H73
Dimensions (WxDxH) mm	165x220x335
Voltage	240V/Single Phase/Neutral
El. Plug (Amps)	13
El. Consumption (kW)	2
Temperature	0 - 95°C

Features

- Digital display



Double Panini Grill

At a Glance

Model	H31B
Dimensions (WxDxH) mm	540x390x210
Voltage	240V/Single Phase/Neutral
El. Plug (Amps)	13
El. Consumption (kW)	2.9

Features

- Adjustable swivel head
- Variable heat control



Conveyor Toaster

At a Glance

Model	H54A
Dimensions (WxDxH) mm	370x640x400
Voltage	240V/Single Phase/Neutral
El. Plug (Amps)	13
El. Consumption (kW)	2.8
Extra Details	Produces 360 slices per hour

Features

- Double feed



1000W Commercial Microwave

At a Glance

Model	H12B
Dimensions (W×D×H) mm	425×510×335
Voltage	240V/Single Phase/Neutral
El. Plug (Amps)	13
El. Consumption (kW)	3

Features

- LED internal light
- Stainless steel



750W Commercial Microwave

At a Glance

Model	H12A
Dimensions (W×D×H) mm	500×400×300
Voltage	240V/Single Phase/Neutral
El. Plug (Amps)	13
El. Consumption (kW)	1.5

Features

- 5 power settings
- Glass turntable ensures consistent cooking



Table Top Oven

At a Glance

Model	H17B
Dimensions (W×D×H) mm	360×420×250
Voltage	240V/Single Phase/Neutral
El. Plug (Amps)	13
El. Consumption (kW)	1.5

Features

- Double glazed door
- Curved back to accommodate circular dishes



Rice Cooker

At a Glance

Model	H30
Dimensions (WxDxH) mm	460x400x345
Voltage	240V/Single Phase/Neutral
El. Plug (Amps)	13
El. Consumption (kW)	1.95
Output	13 ltr. / 52 portions of cooked rice*
Extra Details	13 ltr. cooked rice / 6 ltr. dry rice capacity

Features

- Stainless steel
- Auto switch from cook to warm
- Rice measure included
- Cooking time: approx 40 minutes



*All portion sizes are based on a 250ml cooked rice portion.

Hot Holding Equipment

1.2m Plaine Top Hot Cupboard

At a Glance

Model	H42A
Dimensions (WxDxH) mm	1270x670x900
Voltage	240V/Single Phase/Neutral
El. Plug (Amps)	13
El. Consumption (kW)	1.5

Features

- Curly cable with plug park
- Digital temperature display



1.2m Bain Marie Hot Cupboard

At a Glance

Model	H24B
Dimensions (WxDxH) mm	1270x670x900
Voltage	240V/Single Phase/Neutral
El. Plug (Amps)	13
El. Consumption (kW)	3
Extra Details	3 x GN1/1 tray capacity*

Features

- Curly cable with plug park.
- Digital temperature display



*Please see diagram for GN tray sizes on p. 85

Hot Cupboard Gantry Heat Lamp

At a Glance

Model	H23D
Dimensions (W×D×H) mm	1200×360×500
Voltage	240V/Single Phase/Neutral
El. Plug (Amps)	13
El. Consumption (kW)	1
Extra Details	Suitable for H42A or H24B

Features

- Stainless steel
- Three built-in heat lamps underneath
- Magnetic feet



Banquet Cart

At a Glance

Model	H58
Dimensions (W×D×H) mm	1070×760×1810
Voltage	240V/Single Phase/Neutral
El. Plug (Amps)	13
El. Consumption (kW)	1.5

Features

- Integral water reservoir to cabinet base
- Curly cable with plug park
- 4 shelves and supports



Carvery Pads

At a Glance

Model	H55A
Dimensions (W×D×H) mm	400×400×550
Voltage	240V/Single Phase/Neutral
El. Plug (Amps)	13
El. Consumption (kW)	0.7

Features

- Portable
- Heated spiked top



Double Gantry Light

At a Glance

Model	H23F
Dimensions (WxDxH) mm	725x505x735
Voltage	240V/Single Phase/Neutral
El. Plug (Amps)	13
El. Consumption (kW)	1.3

Features

- Height adjustable acrylic sneeze screen
- Attractive copper effect light shades
- Independent controls to base and gantry



Triple Gantry Light

At a Glance

Model	H23C
Dimensions (WxDxH) mm	805x505x735
Voltage	240V/Single Phase/Neutral
El. Plug (Amps)	13
El. Consumption (kW)	1.6

Features

- Height adjustable acrylic sneeze screen
- Attractive copper effect light shades
- Independent controls to base and gantry



Table Top Bain Marie

At a Glance

Model	H24D
Dimensions (WxDxH) mm	360x580x280
Voltage	240V/Single Phase/Neutral
El. Plug (Amps)	13
El. Consumption (kW)	1.5
Extra Details	1 x GN1/1 or 3 x GN1/3 tray capacity*

Features

- Adjustable temperature control



*Please see diagram for GN tray sizes on p. 85

Stainless Steel Table

At a Glance

Model	H20A	H20B	H20C
Dimensions (W×D×H) mm	700×600×900	1200×600×900	1800×600×900

Features

- Stainless steel undershelf



Jackstack

At a Glance

Model	H69
Dimensions (W×D×H) mm	600×600×1800
Extra Details	104 plate capacityw

Features

- Swivel castors and brakes



3 Tier Trolley

At a Glance

Model	H34C
Dimensions (W×D×H) mm	860×530×900

Features

- Swivel castors, bumpers and brakes
- Raised handles



Gastro Trolley

At a Glance

Model	H34B
Dimensions (WxDxH) mm	530×390×1600
Extra Details	20×GN1/1 tray capacity*

Features

- Swivel castors and breaks



*Please see diagram for GN tray sizes on p. 85

Table Top Blender

At a Glance

Model	H43A
Dimensions (WxDxH) mm	200×245×345
Voltage	240V/Single Phase/Neutral
El. Plug (Amps)	13
El. Consumption (kW)	0.37
Extra Details	1 ltr. capacity

Features

- Removable lid cap
- Crushes ice in seconds
- Pulse controls: high, low and off



Stick Blender

At a Glance

Model	H43B
Dimensions (dia. xH) mm	diam.70×h395
Voltage	240V/Single Phase/Neutral
El. Plug (Amps)	13
El. Consumption (kW)	0.22
Extra Details	Shaft length - 160mm

Features

- 4 blade emulsifying knife
- Lightweight
- Titanium coated blade



Food Processor

At a Glance

Model	H43C
Dimensions (W×D×H) mm	220×280×500
Voltage	240V/Single Phase/Neutral
El. Plug (Amps)	13
El. Consumption (kW)	0.55
Extra Details	2.9 ltr. capacity

Features

- Speed: 1500rpm
- Powerful high performance induction motor



10 Ltr. Planetary Mixer

At a Glance

Model	H44A
Dimensions (W×D×H) mm	410×485×635
Voltage	240V/Single Phase/Neutral
El. Plug (Amps)	13
El. Consumption (kW)	0.5
Extra Details	10 ltr. capacity

Features

- Three speed settings
- Bowl guard
- Lever operated bowl lift
- Stainless steel bowl
- Safety stop function
- Not suitable for dough pizza



4 Ltr. Planetary Mixer

At a Glance

Model	H44B
Dimensions (W×D×H) mm	230×400×300
Voltage	240V/Single Phase/Neutral
El. Plug (Amps)	13
El. Consumption (kW)	1.4
Extra Details	4 ltr. capacity

Features

- 8 speed settings including a pulse function
- Automatic electronic speed control



22cm Meat Slicer

At a Glance

Model	H36A
Dimensions (WxDxH) mm	445x445x457
Voltage	240V/Single Phase/Neutral
El. Plug (Amps)	13
El. Consumption (kW)	0.2
Extra Details	Blade diam. 220mm

Features

- Integral sharpener
- Built-in guards
- Adjustable thickness control
- Anodized aluminium body



30cm Meat Slicer

At a Glance

Model	H36B
Dimensions (WxDxH) mm	500x450x585
Voltage	240V/Single Phase/Neutral
El. Plug (Amps)	13
El. Consumption (kW)	0.2
Extra Details	Blade diam. 300mm

Features

- Integral sharpener
- Built-in guards
- Adjustable thickness control
- Anodized aluminium body



Soup Kettle

At a Glance

Model	H61
Dimensions (WxDxH) mm	diam. 345xh360
Voltage	240V/Single Phase/Neutral
El. Plug (Amps)	13
El. Consumption (kW)	0.4
Temperature	35 - 95°C
Extra Details	10 ltr. capacity

Features

- Temperature dial
- Hinged lid



Scales

At a Glance

Model	H44F
Dimensions (W×D×H) mm	305×250×100
Voltage	240V/Single Phase/Neutral
El. Plug (Amps)	13
El. Consumption (kW)	0.1
Extra Details	12lbs / 6kg capacity



Features

- Stainless steel
- Measures kg/g/lb/oz

Pedal Sack Holder

At a Glance

Model	H74
Dimensions (W×D×H) mm	430×300×880

Features

- Stainless steel and chrome plated steel
- Free standing
- Foot pedal operation



Insectocutor

At a Glance

Model	H52
Dimensions (W×D×H) mm	650×860×320
Voltage	240V/Single Phase/Neutral
El. Plug (Amps)	13
El. Consumption (kW)	0.1

Features

- Removable catchment tray
- Free standing or ceiling mounting



Double Bowl Juice Dispenser

At a Glance

Model	H6A
Dimensions (WxDxH) mm	420x450x635
Voltage	240V/Single Phase/Neutral
El. Plug (Amps)	13
El. Consumption (kW)	0.4
Temperature	+6...+12°C
Extra Details	2 x 12 ltr. capacity

Features

- Adjustable thermostat control
- Non-drip stainless steel taps
- Froth-free stirring



26Kg Ice Maker

At a Glance

Model	H63B
Dimensions (WxDxH) mm	420x510x700
Voltage	240V/Single Phase/Neutral
El. Plug (Amps)	13
El. Consumption (kW)	0.4
Water Inlet/Drain	In ¾" BSP - Out 40mm diam.
Output	26kg in 24 hours

Features

- Standard ice cube: 18g
- 6kg storage



90Kg Ice Maker

At a Glance

Model	H63C
Dimensions (WxDxH) mm	740x600x1120
Voltage	240V/Single Phase/Neutral
El. Plug (Amps)	13
El. Consumption (kW)	0.9
Water Inlet/Drain	In ¾" BSP - Out 40mm diam.
Output	95kg in 24 hours

Features

- Standard ice cube: 18g
- 55kg storage



Water Dispenser

At a Glance

Model	H7
Dimensions (W×D×H) mm	300×330×1400
Voltage	240V/Single Phase/Neutral
El. Plug (Amps)	13
El. Consumption (kW)	0.6
Extra Details	19 ltr. bottle capacity

Features

- Dual tap
- 2 canisters of water included



Filter Coffee Maker

At a Glance

Model	H11B
Dimensions (W×D×H) mm	210×390×470
Voltage	240V/Single Phase/Neutral
El. Plug (Amps)	13
El. Consumption (kW)	2
Extra Details	Produces up to 120 cups per hour or 1.8 ltr. jug in 5 minutes

Features

- Upper and lower hotplates
- Manual water fill



Nespresso Capsule Coffee Machine

At a Glance

Model	H11C
Dimensions (W×D×H) mm	120×230×320
Voltage	240V/Single Phase/Neutral
El. Plug (Amps)	13
El. Consumption (kW)	1.3

Features

- Automatic volume control
- Automatic power-off
- High pressure pump
- Capsules not included



Kettle

At a Glance

Model	H45
Dimensions (W×D×H) mm	135×250×255
Voltage	240V/Single Phase/Neutral
El. Plug (Amps)	13
El. Consumption (kW)	2.5
Extra Details	1.5 ltr. capacity

Features

- Automatic switch off
- Visible water gauge



25-30 Ltr. Water Boiler

At a Glance

Model	H46A
Dimensions (W×D×H) mm	435×440×520
Voltage	240V/Single Phase/Neutral
El. Plug (Amps)	13
El. Consumption (kW)	2.6
Extra Details	25-30 ltr. water capacity

Features

- Polished stainless steel body
- Non-drip tap
- Manual fill



10 Ltr. Water Boiler

At a Glance

Model	H46C
Dimensions (W×D×H) mm	255×450×560
Voltage	240V/Single Phase/Neutral
El. Plug (Amps)	13
El. Consumption (kW)	3
Water Inlet/Drain	in ¾" BSP
Temperature	70 - 96°C
Extra Details	10 ltr. water capacity

Features

- Stainless steel
- Auto fill
- Output: 3 ltr. per hour with 10 ltr. rapid draw off



Gas Rinnai Water Heater

At a Glance

Model	H53
Dimensions (W×D×H) mm	1100×500×1210
Voltage	240V/Single Phase/Neutral
El. Plug (Amps)	16
El. Consumption (kW)	2
Gas Connection	¾" BSP
Gas Consumption (kW)	63
Water Inlet/Drain	Cold in 22mm - Hot out 22mm

Features

- Flow rate: up to 37 ltr. per minute, 820 ltr. per hour
- Minimum operating pressure 1.0 bar



Electric Instantaneous Water Heater

At a Glance

Model	H53B
Dimensions (W×D×H) mm	230×100×470
Voltage	400V/Three Phase/Neutral
El. Plug (Amps)	32 Amp
El. Consumption (kW)	27
Water inlet / drain	Cold in 15mm - Hot out 15mm

Features

- Electronic control with dial temperature adjust
- Compact design and easy to install



Electric Under Sink Water Boiler

At a Glance

Model	H53C
Dimensions (W×D×H) mm	360×330×360
Dimensions (W×D×H) mm	350×370×510 including copper connection pipes
Voltage	240V/Single Phase/Neutral
El. Consumption (kW)	3
El. Plug (Amps)	13 Amp
Water inlet / drain	Cold in 15mm - Hot out 15mm
Extra Details	15ltr. water capacity

Features

- Easy to operate with mechanical dial
- 'E' setting on the dial to optimise comfort and energy saving
- Fast reheat times



Self-Contained Sink

At a Glance

Model	H21C
Dimensions (W×D×H) mm	555×505×860
Voltage	240V/Single Phase/Neutral
El. Plug (Amps)	13
El. Consumption (kW)	3
Extra Details	25 ltr. water capacity

Features

- Foot pump installed
- Removable lid to manually refill
- Heating element built-in
- Manual fill



Single Bowl Stainless Steel Sink

At a Glance

Model	H21A
Dimensions (W×D×H) mm	1000×600×900
Water Inlet/Drain	In ½" BSP - Out 40mm diam.

Features

- Complete with undershelf
- Rear upstand and raised lip
- Angled draining board



Double Bowl Stainless Steel Sink

At a Glance

Model	H21B
Dimensions (W×D×H) mm	1500×600×900
Water Inlet/Drain	In ½" BSP - Out 40mm diam.

Features

- Complete with undershelf
- Rear upstand and raised lip
- Angled draining rack



Plumbed Hand-Wash Basin

At a Glance

Model	H21D
Dimensions (W×D×H) mm	300×310×1500
Water Inlet/Drain	In ½" BSP - Out 40mm diam.

Features

- Supplied with tissue and soap dispenser



Single Pot Sink

At a Glance

Model	H21F
Dimensions (W×D×H) mm	1200×650×900
Water inlet / drain	In ½" BSP - Out 400mm diam.
Bowl Size (W×D×H)mm	700×500×350

Features

- Complete with undershelf



Double Pot Sink

At a Glance

Model	H21G
Dimensions (W×D×H) mm	1800×650×900
Water inlet / drain	In ½" BSP - Out 40mm diam.
Bowl Size (W×D×H)mm	700×500×350

Features

- Complete with undershelf



Dish / Glass Washer 50x50

At a Glance

Model	H47B
Dimensions (WxDxH) mm	580×610×830
Voltage	240/Single Phase/Neutral
El. Plug (Amps)	13
El. Consumption (kW)	2
Water Inlet/Drain	In ¾" BSP - Out 40mm diam.

Features

- Cycle time: 60 - 180 seconds
- Double skinned construction (door only)
- 50x50 basket, rinse dispenser, detergent dispenser and drain pump built-in
- Loading height: 360mm



Dish / Glass Washer 50x50

Three phase upon request

At a Glance

Model	H47B
Dimensions external (WxDxH) mm	580×610×830
Voltage	400V/Three Phase/Neutral
El. Plug (Amps)	16
El. Consumption (kW)	6
Water Inlet/Drain	In ¾" BSP - Out 40mm diam.

Features

- Cycle time: 60 - 180 seconds
- Double skinned construction (door only)
- 50x50 basket, rinse dispenser, detergent dispenser and drain pump built-in
- Loading height: 360mm



Pass-Through Dish Washer

At a Glance

Model	H47A
Dimensions (WxDxH) mm	720/2020×815×1510/2000
Voltage	400V/Three Phase/Neutral
El. Plug (Amps)	16
El. Consumption (kW)	7
Water Inlet/Drain	In ¾" BSP - Out 40mm diam.

Features

- Cycle time: 60 - 90 seconds
- 50x50 basket, rinse dispenser, detergent dispenser, drain pump built-in and side tables
- Upon request, we can supply with pre-wash sink (H47A KIT)



Pre-Rinse Table for Pass-Through Dish Washer

At a Glance

Model	H47A Kit
Dimensions (W×D×H) mm	700×635×890
Water Inlet/Drain	In ½" BSP – Out 40mm diam.

Features

- Includes pre-rinse tap
- Robust stainless steel construction
- Adjustable legs



Conveyor Dish Washer 50x50

At a Glance

Model	H47D
Dimensions (W×D×H) mm	1350/4000×785×1970
Voltage	400V/Three Phase/Neutral
El. Plug (Amps)	63
El. Consumption (kW)	36.2
Water Inlet/Drain	In 2×¾" BSP - Out 50mm diam.
Output	1980 dishes per hour

Features

- 50×50 basket and side tables
- Please specify if you require a left to right or right to left operation direction setup on enquiry
- This unit can be setup to feed either from the left or from the right, please specify on enquiry



Propane Gas Bottle

At a Glance

Model	H51C
Dimensions (W×D) mm	375×1290
Capacity	47kg

Features

- Additional sizes available upon request



Medium Gas Cylinder Cage

At a Glance

Model	H51
Dimensions (W×D×H) mm	1000×500×1400
Extra Details	Suitable for 2×47kg cylinders

Features

- Padlockable hinged door



Large Gas Cylinder Cage

At a Glance

Model	H51D
Dimensions external (W×D) mm	1300×1240×1800
Extra Details	Suitable for 9×47kg cylinders

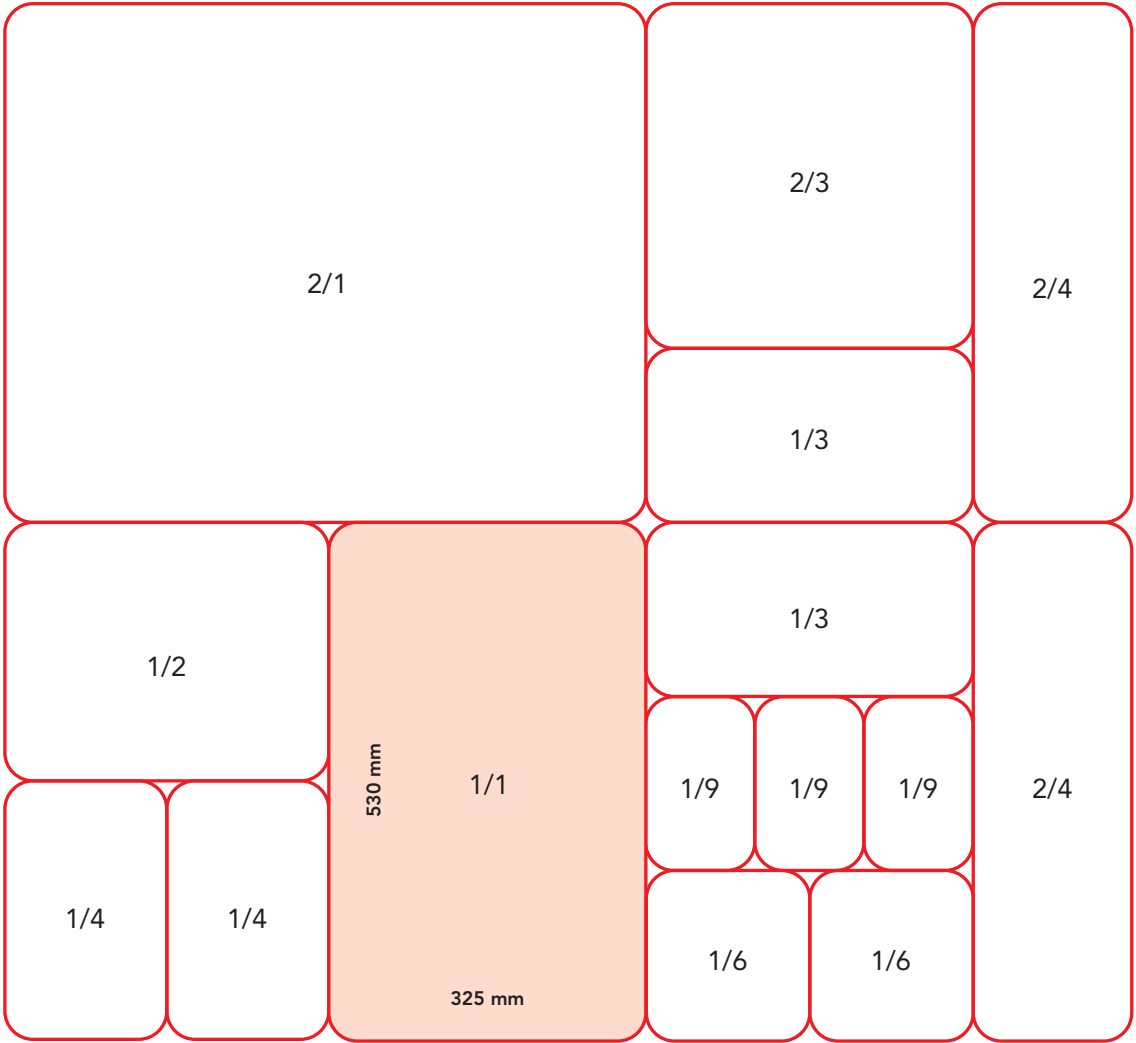
Features

- Padlockable hinged door



GN Tray Diagram

Gastronorm tray sizes



- A Series, p. 4
 AC Series, p. 4

 B Corner, p. 5
 B Series, p. 5
 Beer Dump, p. 26
 Blast Chiller/Freezer, p. 26, 42

 C2R, p. 14
 C2-SD, p. 15
 Central Island Canopies, p. 49
 CLT Series, p. 14
 Crystal Series, p. 10
 CT Series, p. 13

 D Series, p. 7, 29
 D1, p. 28
 D1C, p. 28
 Dry Store Units, p. 46

 E Series, p. 22, 36
 E1NL, E1.7NL, E2NL, p. 27
 E1NS, E2NS, p. 27
 E5, p. 34
 E6A, p. 7, 29
 EH21A, p. 61
 EH21B, p. 60
 EH21C, p. 61
 EH21D, p. 61

 F Series, p. 40
 F1S, p. 40
 F1SS, p. 41
 F2SS, p. 41
 F3SS, p. 42
 Field Kitchens, p. 47
 Fish Counter, p. 6

 G1, p. 32
 G1S, p. 15, 33
 G2, p. 38
 G3, p. 24, 39
 G4, p. 16
 G4WS, p. 17
 G4WT, p. 21
 G5/600, p. 24
 G7 / G7XXL, p. 16, 33
 G8S, p. 17, 34
 GN COMBI 10E, p. 55
 GN COMBI 10G, p. 60
 GN COMBI 24E, p. 55
 GN COMBI 24G, p. 60

 GN Diagram, p. 85
 GN1, p. 25, 38
 GN2, GN3, p. 25
 GN3DBF, p. 39

 H Series, p. 23, 37
 H10A, p. 63
 H10B, p. 63
 H10D, p. 64
 H11B, p. 17
 H11C, p. 77
 H12A, p. 67
 H12B, p. 67
 H14A, p. 62
 H14B, p. 63
 H15A, p. 64
 H15B, p. 64
 H15C, p. 57
 H15D, p. 52
 H17B, p. 67
 H17C, p. 62
 H17D, p. 62
 H18A, p. 54
 H18B, p. 59
 H20A, p. 71
 H20B, p. 71
 H20C, p. 71
 H21A, p. 80
 H21B, p. 80
 H21C, p. 80
 H21D, p. 81
 H21F, p. 81
 H21G, p. 81
 H23C, p. 70
 H23D, p. 68
 H23F, p. 70
 H24B, p. 68
 H24D, p. 70
 H28B, p. 56
 H29A, p. 65
 H29B, p. 54
 H29C, p. 58
 H30, p. 68
 H31B, p. 66
 H34B, p. 72
 H34C, p. 71
 H36A, p. 74
 H36B, p. 74
 H3DD, p. 18
 H3N, p. 20
 H3R, p. 18
 H3W, p. 19

 H3WT, p. 21
 H4, p. 19
 H40A, p. 52
 H40B, p. 56
 H41A, p. 52
 H41B, p. 56
 H42A, p. 68
 H43A, p. 72
 H43B, p. 72
 H43C, p. 73
 H44A, p. 73
 H44B, p. 73
 H44F, p. 75
 H45, p. 78
 H46A, p. 78
 H46C, p. 78
 H47A, p. 82
 H47A Kit, p. 83
 H47B, p. 82
 H47D, p. 83
 H48C, p. 54
 H48D, p. 59
 H49B, p. 58
 H49C, p. 53
 H49D, p. 58
 H5, p. 23, 37
 H51, p. 84
 H51C, p. 84
 H51D, p. 84
 H52, p. 75
 H53, p. 79
 H53B, p. 79
 H53C, p. 79
 H54A, p. 66
 H55A, p. 69
 H58, p. 69
 H61, p. 74
 H63B, p. 76
 H63C, p. 76
 H69, p. 71
 H6A, p. 76
 H7, p. 77
 H72A, p. 55
 H72B, p. 59
 H73, p. 66
 H74, p. 75
 H91A, p. 53
 H91B, p. 57
 H91C, p. 53
 H91D, p. 57
 H9A, p. 65
 H9E, p. 65

 K1, p. 8, 31
 K1R / K2R, p. 8, 31
 K4, p. 9, 32

 L1F, p. 10, 30
 L1S, p. 9, 30

 M Series Dome, p. 12
 M Series Wooden, p. 13
 Magnum Kitchens, p. 48
 Meat Dry Ager, p. 12
 Mini Kitchens, p. 47
 Mixed Double Kitchens, p. 48
 Modular Cold Rooms, p. 43

 N2, p. 35
 N2C, p. 11
 N2K, p. 11
 N3W, p. 20

 Panarea, p. 6
 Pot Wash Units, p. 50
 Preparation Kitchens, p. 49

 Temporary Food Cube, p. 46
 Temporary Kitchens, p. 46



Global Headquarters

Lowe Rental Ltd

Lissie Industrial Estate East
9 Lissie Walk
Lisburn
Co. Antrim
BT28 2LU
Northern Ireland

Lowe Rental Ltd

Unit 37,
Marchington Industrial Estate
Uttoxeter, Staffordshire
England
ST14 8LP

Lowe Rental Ltd

Unit 1B Excelsior Park
Canyon Road
Netherton Industrial Estate
Wishaw, Scotland
ML2 0EG

PKL Group (UK) Ltd

Stella Way,
Bishops Cleeve
Cheltenham
Gloucestershire

Lowe Rental

Building F 3Q,
Bund Soho, No. 88
Second East Zhongshan Rd,
Huangpu District, Shanghai,
P.R.China, 200002

Lowe Rental Ltd

Room 11, 14 Floor,
Wah Wai Centre
38-40 Au Pui Wan Street
Fo Tan,
New Territories,
Hong Kong

Lowe Rental Pte. Ltd

7 Kaki Bukit Crescent
#01-01 Fullion Building
416239
Singapore

Lowe Rental Inc.

6855 Speedway Blvd,
Suite 101,
Las Vegas,
Nevada 89115

Lowe Rental Inc.

7405 Graham Road,
Suite B
Fairburn
GA 30213

Lowe Deutschland GmbH

Hohlstuck 4
56368 Klingelbach
Germany

Lowe Refrigeration LLC

DIP 1 First Gulf Properties
Warehouse Complex
Warehouse WJ1 & WJ2
PO Box 392327
Dubai, UAE



